

# ***Dorchester News***

*Free to every home in the parish*

*October 2020*







**In this issue**

**Dorchester Abbey**

Friends of Dorchester Abbey	3
Talking Point	3
Dorchester Team Discretionary Fund	4
Heavenly Host—Dorchester-	4
Worship during October	4
Dorchester Abbey Christmas Cards	10
Abbey Education Officer Farewell	12
Dorchester October Run	14
Dorchester Abbey Museum News	15
How to make a Heavenly Host Angel	18

**Clubs, Societies and Sports**

Dorchester British Legion	5
Hempcroft Allotments	5
DADS Weekly fun during Lockdown	7
Tennis Club	11

**Village news/articles**

Village Hall Prize Draw	5
Village Hall Bookings Officer Required	8
Welcome to new landlord at The George	8
Autumn Flower Show	16
Remembering The George Hotel	20

**Art Music and Publications**

Home library service	7
Crossword Solution	21
Wallingford Corn Exchange	29

**Community and Charities**

Wallingford Food Bank	5
Healthwatch Oxfordshire	19
Hydrotherapy pool under threat	19
Organise fuel bills, suppliers before winter	19

**Local and national government**

From your Parish Council Chairman	23
Parish Council Notices	23
From your District Councillor	25
From your County Councillor	27
From your MP	28

**Schools and Education**

Pre-school	9
St Birinus School	9

**Wallingford**

Corn Exchange	29
Wallingford Historical Walks	29
Wallingford Museum Bookshop	29

**Advertising**

Advertising in Dorchester News	21
Index of advertisers	31

**DoT view**

Things seemed to be taking a step towards getting back to normality.

Church services have been held both in person and online for some weeks now, the Village Hall re-opened a few weeks ago, and the first OSJ concert in Dorchester Abbey is due to take place at the end of September. And the pubs and hotels, having benefitted from the government scheme to subsidise meals Monday to Wednesday, are now getting back to bringing in their own income.

However, it is quite possible that by the time you read this, all could have changed. A surge in the number of Covid-19 cases could result in all these organisations having to reduce their opening or cancelling events.

Even if that does not happen, they are all left with a shortfall in their income this year, and possibly into next. Socially distanced eating and drinking, worshipping and concert-going does not allow them to generate the income that they need. Other groups, such as DADS, who are not yet able to put on a production, and the Abbey bell-ringers and choir who have had no weddings, their main sources of income, are also left without any income for this year.

There is a whole debate about doing what we individually feel comfortable with, taking into account the risk to ourselves and to others, but for us to be able to return to the lively village we had pre-Covid, with all of these and other institutions intact, then we should be considering how we can help them, so much part of the village, to survive this pandemic.

**Ian Brace**

**Editorial Team**

Ian Brace, Kathy Glass

**Distribution Co-ordinator**

Maurice Day

**Printed by**

Artisan Print Solutions

Cover picture: The evening sun plays on the Abbey tower by Fabiola Pinheiro

**Deadline for  
November  
Dorchester News**



**November  
Friday  
9 October**

email:

[dorchesternews@dorchesteronthames.co.uk](mailto:dorchesternews@dorchesteronthames.co.uk)

Dear Friends

We are back in a 'who knows...' situation which changed between Jennifer writing Talking Point and me preparing this note. In the Abbey we have just managed to have an outdoor Harvest service and our 'What did you do in Lockdown' exhibition and await further government guidance. Sadly the thank you party for our amazing volunteers did have to be cancelled – so THANK YOU volunteers we know you don't need a party but you do need our thanks for the amazing work you have done during the year.

I am hoping that we can introduce a 'by invitation' community coffee morning with strict seating arrangements and table service on Tuesdays – please get in touch if you are interested. At the moment the government has said that we can continue to worship in a Covid secure manner and we have been able to re-introduce some music from the choir although no congregational singing. Please look out for details of Christmas services in the November issue of the Dorchester News – they will definitely happen but may look just a little different!

Revd Sue Booy

### Talking Point

By the time you read this the nights will have drawn in even more and we will be heading for the clocks changing. The tang of approaching autumn that is in the air as I write this at the beginning of September will have become the norm and the swallows now gathering on the wires long gone.

Autumn is a time of year that sees nature closing down for the winter yet it is also the beginning of much in our society, especially this year as we emerge from lockdown. Autumn is the beginning of the academic year and for those involved in education we have seen children and young people return to schools and colleges. But not in the same way. The arrangements that have had to be put in place have required a huge amount of work in difficult circumstances to ensure as safe an environment as possible for everyone.

This gradual opening up after lockdown has been greeted with mixed emotions. Some so carefree that they think they can just do what they like and the risk has passed. Others still feel so anxious and vulnerable that they are reluctant to go out in public. Most of us are probably somewhere in between and the places and circumstances where we feel comfortable will vary for each one of us.

There is a passage in Paul's letter to the Romans that talks about how we should care about people's different opinions. The matter in question was to do with traditions that were considered to be still valid for some of the early Christian community but not for others. Paul writes *We who are strong ought to put up with the failings of the weak, and not to please ourselves.*<sup>2</sup> *Each of us must please our neighbour for the good purpose of building up the neighbour.* (Romans 15:1-2)

The future is uncertain and as we approach winter we may face greater risks to our health. Surely, therefore, we should be acting in ways that reassure the most vulnerable in our society. To be courteous when out in public and whatever our opinions about masks, social distancing and meeting up with others have respect for those who do not feel as confident as we do or are simply more cautious for reasons we may not be aware of.

I am sure we have all had our ups and downs during these peculiar times and had to manage difficult choices, but one thing that seems to have stood out is the support for others in our local communities. Therefore in this transition time let us make sure that the care and concern for our neighbour does not evaporate but continues to be an encouragement for us all, whatever the future holds.

## The Friends of Dorchester Abbey and the Beauforest Society

### Help to support your Abbey.

The Friends of Dorchester Abbey and the Beauforest Society are charities that support the Parochial Church Council but have a separate legal identity. They raise funds to be used exclusively for the restoration, maintenance, and improvements to the structure of the Church and the Abbey Guesthouse.



The annual subscription for the Friends is a minimum of £25 or Life Membership of £350. For the Beauforest Society the annual subscription is £100.

Details of the work of the Friends together with application forms can be found on the Dorchester Abbey website [www.dorchester-abbey.org.uk](http://www.dorchester-abbey.org.uk) and the Friends' notice board in the Abbey.

For further information contact the membership secretary, Mrs Honor Juniper. **01865 343228** or email [friends@dorchester-abbey.org.uk](mailto:friends@dorchester-abbey.org.uk)



## Worship during October

The gradual return to parish worship has been welcomed by everyone but compiling information for this newsletter immediately after the first round of restrictions means that, although we have made a few tweaks to the programme we are not yet confident to expand. For October we will continue to offer a 10.30 service for the whole Team on Zoom alongside fortnightly parish or group worship. There may be some 'tweaks' to this which will be advertised through weekly emails and local contact.

### 4 Oct

- 10.30am Bishop Colin's farewell to Dorchester Team
- 8.00am Holy Communion Warborough
- 9.00am Holy Communion Drayton
- 9.30am Short Parish Prayers Clifton Hampden

### 11 Oct

- 10.30am Holy Communion at Stadhampton
- 8.00am Holy Communion Dorchester
- 9.00am Holy Communion Berinsfield
- 9.30am Holy Communion Long Wittenham
- 5.00pm Marsh Baldon

### 18 Oct

- 10.30am Berinsfield – St Luke's tide service
- 8.00am Holy Communion Warborough
- 9.00am Holy Communion Drayton
- 10.30am Clifton Hampden Harvest Festival

### 25 Oct

- 10.30am Dorchester Holy Communion—Bible Sunday
- 8.00am Holy Communion Dorchester
- 9.00am Holy Communion Stadhampton
- 9.30pm Holy Communion Long Wittenham
- 5.00pm Toot Baldon

Wherever you live you may go to any of these services to worship. All we ask is that you make sure that we know you are coming by emailing or telephoning the parish office.

This is the pattern of services for October. The services at 10.30am will be broadcast on Zoom

### Bishop Colin Farewell to the Dorchester Team on 4 October

This will be a 'live' service broadcast from Dorchester Abbey solely for our Team. There will be an opportunity to attend this service in person but we expect demand to be high and we will, if necessary, draw names from a hat! If you haven't already done so please register your interest for this service with the parish office by telephoning **01865 340007**. We are delighted that the Rev Canon Rachel Carnegie will be formally licensed to the Team at this service.

### Licensing of the Rev Paul Wignall to the Bridge Group of parishes on 7 October

Again this will be a 'live' service broadcast from the Abbey. The link for Zoom will be published on the Services page of the Dorchester Abbey Website. The details are

Meeting ID: 879 7398 7347

Passcode: Bridge

### Dorchester Team Discretionary Fund

The clergy have at their disposal a limited fund which we are able to spend to support people who are in financial difficulties. It is particularly helpful in an emergency as we are able to be flexible and turn around funding very quickly. If you feel this fund could help someone you know, talk to one of the clergy to find out more. Referrals are through the clergy and local health/ social provider professionals.



### Heavenly Host – Dorchester Visitation of Angels

This was not the plan. 2020 was going to be an Angels-free year.

But it wasn't, was it? We have been blessed with wonderful angel heroes in many public service, retail and voluntary roles locally and nationally. So Heavenly Host Angels (small hand made angels) will visit Dorchester, bringing joy and fun in Advent. (Safety issues re quarantine and distribution will be addressed, according to then current rules.)

If you would like to knit an angel free kits will be available, from **September 27**, in the back of the Abbey during its open hours (see Abbey website). Spare yarn gratefully accepted. Please contact Denise Line on **340905**. The Facebook page is **Heavenly Host Dorchester on Thames**.

A pattern, including further information, is reproduced in this magazine on page 18

## Massage Matters

Massage treatments are back!! It would be my pleasure to welcome you back to Massage Matters or to meet you for the first time. We continue to be in unprecedented times causing stress and upset. Massage can help you to feel more relaxed, restored and resilient. Please see the website for details of new COVID practices to keep you safe.

Gift vouchers, and weekend treatments available.  
Based at The George Hotel, Dorchester-on-Thames. Entrance off the High Street.

To advance book please call **07725 062259** or email [massagematterstone@gmail.com](mailto:massagematterstone@gmail.com) – for more information visit [www.massagematters.me.uk](http://www.massagematters.me.uk)





## Dorchester Village Hall 200 Club Prize Draw

Congratulations to the winners of the September draw.

1st Prize	£75	No. 80 Dr M Airs
2nd Prize	£45	No. 192 Mr R Anderson
3rd Prize	£25	No.131 Mr G Stores

The next draw will be in December, with a first prize of **£100** so join now for a chance to win!

The 200 Club is a quarterly prize draw to reward supporters and raise funds for the village hall. We need new members to keep the draw worthwhile but there are good odds of winning as there is a maximum of 200 tickets in the draw. A ticket for the year (4 draws from when you join) only costs £12. To join, contact Elaine Moore on **340441** or email

**200club@dotvh.org.uk** for a form. You can pay by cash, cheque or standing order.

Thank you for your support and good luck!

**Elaine**



## Dorchester and District Royal British Legion

As I write the inaugural meeting of Dorchester and District Royal British Legion planned for Wednesday 23 September will hopefully have already taken place.

However, we have been informed by the Legion headquarters that there can be no 'face to face' AGMs this year. Normally this must be held between 1 October and 30 November each year. We will therefore try to arrange an alternative digital means of meeting (probably by using Zoom). Members will be advised of the details of when and how this will be conducted by email or post closer to the time.

Similarly we hope to be able to provide further details of the Remembrance Day service that will take place on **Sunday 8 November** in next month's Dorchester News.

**Chris Hill**  
Chairman of Dorchester and District RBL.

## Wallingford Food Bank

Thank you to everyone who donated food and other items this month. This has enabled us to take more than ten bags of goods to the distribution point in Wallingford for the volunteers to make deliveries to needy households.

I have just received last month's report from Wallingford. The Food Bank premises do not have a lot of storage space and at the moment they do not need any more donations of pasta, baked beans, tinned tomatoes and soup. There is however urgent need for hot dogs, corned beef, rice pudding, custard, cereal, biscuits and long life fruit juice.

You can still leave donations in my yellow box and we will take them to Wallingford as usual, but I understand that the Food Bank donations box is back again in Waitrose in Wallingford for those of you who prefer to donate there.

**Judy Parker**



## Hempcroft Allotments October

Each year four trophies are awarded by the Hempcroft Allotment Association and these are normally presented at the AGM towards the end of September. This year for Covid 19 reasons the normal AGM will not be held and therefore the winners of the particular trophies are announced via this column. There has been a tremendous amount of work carried out this year by allotment holders and many people have commented that the Allotments have never looked better.

### Best Overall Allotment. - Simon Stafford

A combination of good husbandry and crop diversity in a well managed allotment.

### Best Crop Diversity - Peter Collinson

This speaks for itself; a nice variety of plants.

### Best Husbandry - Gillian Johnson

Gillian and her immediate neighbours were all strong contenders for this trophy and on a split vote Gillian got it.

### Best Newcomer - Jill Battson

Jill took over a new plot this year and soon every inch of the plot was producing crops.

**Edward Metcalfe**

[edmetcalfe@yahoo.co.uk](mailto:edmetcalfe@yahoo.co.uk)

**01865 340160**

THE HEAD GARDENER'S WIFE  
TEL: 0790 7740670

## Spring Bulbs For Sale!

Hayley will be selling Spring flowering bulbs this September/October. From Alliums to Zantedeschia and everything in between delivered to your door at no extra charge!

Small amounts for pots or large quantities for naturalising. E.G. bag of 1000 mixed/named varieties daffodils – from £80.

If you are interested in receiving a list to order from or interested in a quote please email: [Hayley@theheadgardenerswife.com](mailto:Hayley@theheadgardenerswife.com)

Planting & advice service available.







# horted

Expertise in Horticulture

Garden design  
landscaping  
Hedge cutting  
Lawn care

Roses - Wisteria

Fencing  
Patios

Grounds maintenance

Fruit tree pruning

Get your garden sorted...

01865 965131 or 07565-979689



# DORCHESTER FIREPLACES & INTERIORS

Visit our unique showroom, opposite the beautiful Dorchester Abbey in one of Oxfordshire's most picturesque villages, Dorchester on Thames.

- We offer a complete in house service from design to installation
- SIA Ecodesign ready stoves for 2022 legislation
- Our team of in-house professional fitters are all fully qualified and HETAS registered
- Complimentary home or site visit
- Showroom open 10am to 4pm Tuesday – Saturday
- Woodsure Kiln dried bags of logs, Kindling & Flamers sold here

Tel: 01865 341452 or E-mail  
[enquiries@dorchesterfireplaces.co.uk](mailto:enquiries@dorchesterfireplaces.co.uk)



WOODBURING STOVES FOR THE 21<sup>ST</sup> CENTURY

## Keep it local, keep it In House.



**In House**  
Sales & Lettings  
We value your home

Did you know In House is owned and run by a Dorchester resident, which is why we offer fellow residents a discounted selling or letting fee!

So if you are thinking of selling, letting or just value curious, call In House on

# 01491 839999

**In House...Your local property experts!**





## The Home Library Service is FREE of charge.

Do you enjoy reading or listening to audio books but are not able to get to a library? Then you need the Home Library Service provided by Oxfordshire Libraries.

It's simple to use. A Home Library Service volunteer will be assigned to you to bring new books once a month and collect the ones you have finished with. We offer a full range of books:

- Fiction and non-fiction
- Books in Large Print
- Audio books on CD
- Music CDs
- DVDs

No charge for late returns or reservations

The volunteer will phone you to find out what sort of books you like and if you have got a list of books you would like to read that's even better!

Volunteers wear identification badges and are DBS checked. At the moment they will leave the books on your doorstep so that you're Covid secure.

To register for this service or for further information:

- Phone Linda at Berinsfield Library **01865 340771**

E-mail [berinsfield.library@oxfordshire.gov.uk](mailto:berinsfield.library@oxfordshire.gov.uk)



# DADS

Dorchester Amateur Dramatics Society

## Weekly fun during Lockdown



### Sherlock Holmes and more this month!

There have been many plays that feature Sherlock Holmes but, the first play that we will be reading in October is 'The Speckled Band' which was written by Arthur Conan Doyle himself. Our readings are held online every Monday at 7.30 pm.

Everyone is welcome, whether you would like to read or just want to listen.

You don't have to have any previous acting experience nor do you need to be a member of DADS. You can register to join us via Facebook [@DorchesterAmDramSocietyDADS](https://www.facebook.com/DorchesterAmDramSocietyDADS) or the DADS website [www.dads.org.uk](http://www.dads.org.uk).

For updates on what we will be reading next follow our Facebook page, or email [membershipdads@gmail.com](mailto:membershipdads@gmail.com) and ask to be put on the play reading mailing list.

Larkmead  
VETS



We're working hard during the current UK situation to continue to provide a service to patients that need essential care in line with Government Guidelines.

We can provide video consultations directly with one of our vets to discuss options.



The situation can change rapidly so we are trying to keep our website and social media up to date with latest info!

[www.larkmead.co.uk](http://www.larkmead.co.uk)



Online booking available  
<http://bit.ly/bookthevets>



01491 651379 | Cholsey | Benson | 01235 814991  
Didcot | Great Western Park | Sutton Courtenay



**Culham  
Garden Services**  
Local, Reliable and Professional

James Rockall  
13 High Street  
Culham  
OX14 4NB

Available for all aspects of garden maintenance and clearance  
Call: 07857383069  
[james@culhamgardenservices.co.uk](mailto:james@culhamgardenservices.co.uk)  
Regular maintenance. One-off services. Public liability insured.  
References available. Est.2012

## Welcome to the new landlord and landlady at The George

At the end of August The George saw the arrival of a new landlord and landlady, John and Lesley Williams, who, with their assistant manager, Dale, have now taken over the reins, Jonathan and Soul, featured in the April 2020 issue of Dorchester News having departed. Dorchester News popped along to welcome John.

With the new team there is no shortage of knowledge about managing a pub and hotel. John and Lesley already run the The Old Crown at Faringdon, where they have been for three years and in the pub and hotel business for a lot longer at various locations mostly around Oxfordshire and Wiltshire. They will now run both establishments, with Lesley largely concentrating on The Old Crown and John at The George, but all three of the team will be seen here in Dorchester from time to time.

A week after arriving, they have already made some changes to the bar area and have been giving the kitchen a deep clean. They are also concentrating on getting all the bedrooms up and running, with seven of the 25 out of commission at the moment.

It is a little soon for them to discussing their future plans, but in the immediate term they are extending the opening hours from mid-day to 10.00pm Monday to Thursday, to 11.00pm on Friday and Saturday, with Sunday closing at 8.00pm. They were kicking off with a Curry Night on Friday 4 September, which we hear was well attended. Lunchtime food is kept simple by all dishes being £5.95. The evening menu will feature a special that will constantly change and Sunday lunch will be a highlight of the offering. John says he has an excellent butcher so the roasts on Sundays will be superb.

Some thoughts about the longer term are to open up the function room for events such as wedding receptions, and John says that live music has always played a part in his pubs. At The Old Crown he hosts a three-day music festival each year,



which last year had 45 artists appearing, ranging from belly dancers to rock. Hotel guests had a real American blues band playing for them over breakfast! Perhaps we shall see something similar here.

They are taking over at what is surely quite a difficult time as the progress of the pandemic remains erratic and unpredictable. But I am sure we all wish John, Lesley and Dale well with The George, and hope to see them there for many years to come.



### VILLAGE HALL BOOKINGS OFFICER REQUIRED

**We're looking for someone to co-ordinate our bookings and liaise with people wanting to use our village hall. This would suit someone with some time to spare, an interest in village events and social activities and willing to help us maintain running an essential village asset.**

**Much of the job can be managed at home on a PC along with occasional visits to the village hall.**

**Please take this request seriously; we need help if we hope to keep it viable as an on-going centre for village activities. Without support it cannot continue to be there when it's needed.**

**For more details contact Keith Russell, 01865 340838 or Mark Williams, 01865 340441 or email [admin@dotvh.org.uk](mailto:admin@dotvh.org.uk)**

***Dorchester Village Hall is a registered charity No. 900244***





## St Birinus School News

We finally all returned to school at the beginning of September and what a joy it has been! We have completed our first week now and we all feel tired but glad to be here.

The return to school has been welcome and exciting for our children. They all seem happy and are settling into their new handwashing and sanitising routines really well. Staff are working really hard to ensure procedures are in place to keep everyone safe and well.

It has been an absolute pleasure getting to know the school community over the last week and I'm pleased to tell you that children in our school are enjoying finding out all about their new classmates and topics.

We are all trying to earn Dojo points – an online points system that parents can also access on an app – for displaying our school values; belonging, inclusion, respect, creativity, honesty, trust and compassion. I have been so impressed with the enthusiasm and excitement from the children who love seeing their points appear on the screen.

I would personally like to say thank you to the Dorchester community for making me feel so welcome here. I look forward to sharing more school successes with you as the term goes on.

**Jo Staples**  
Headteacher



## Pre-School

We were very happy to open the doors at the start of the new term and welcome 9 new children to Pre-School. All of the new children have been settling in really well, making new friendships and getting to know each other. We've been painting, exploring with Duplo in the construction area, looking at the numbers 1-5 in the maths area, making noise with the musical instruments and playing outside hunting for bugs.

We had a lovely graduation in the garden for the children who have moved on to school, with most of them going next door to the village school, it's nice to see them walking past in their new uniforms!



If you would like to find out more about what we can offer then please email [admin@dorchesterpreschool.co.uk](mailto:admin@dorchesterpreschool.co.uk).

**Ed Shrimpton**  
Chair

## Berinsfield Library

Please note the changes in opening hours

Monday – closed

Tuesday 2.00-5.00pm (closed am)

Wednesday 10.00-12.30 & 2.00-5.00pm

Thursday Closed

Friday 10.00-12.30 & 2.00-5.00pm

Saturday 10.00-12.30

**Our community activities are all on hold for the moment, but we will be back.**

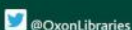
Pop in and see us.

We will meet and greet you, have a one-way system and books are quarantined for 72 hours.

All welcome.

Visit your local library and see what we have on offer

[www.oxfordshire.gov.uk/libraries](http://www.oxfordshire.gov.uk/libraries)



@OxonLibraries



Oxfordshirelibraries



## The Landscape Group Oxford

GARDEN, GROUNDS & PROPERTY MAINTENANCE

Based in Stadhampton we deliver:

- Garden and Grounds Maintenance, including autumn/winter tidying, pruning & mulching
- Fencing, Turfing, Lawn Repairs
- Hedge Cutting and Tree Work
- Drives, Patios and Landscaping
- House and Garden Clearance
- Property Maintenance, inside & out

**Give your garden some TLC over Autumn & Winter!**

£10 million Public Liability Insurance. Trading Standards Approved. Safecontractor Accredited. NPTC & Lantra Qualified.



**'QUALITY, SERVICE & VALUE'**

Tel: 01865 341750

e: [lee@tlgo.co.uk](mailto:lee@tlgo.co.uk)  
w: [www.tlgo.co.uk](http://www.tlgo.co.uk)

# Dorchester Abbey Christmas Cards

*Sold in aid of Dorchester Abbey*

Please do buy Abbey cards this year to support us while our income is affected by corona virus measures. They are available from the museum or from Steph Forman [steph@forman.org.uk](mailto:steph@forman.org.uk) 01865 340434 All cards are sold with envelopes in packs of 10 for £4.50 and are colour printed on glossy quality card with 'Happy Christmas' inside and 'Sold in aid of Dorchester Abbey' on the back.

*(all images are © Nick Forman unless otherwise stated)*

Nativity scene from the East End window  
17.6 x 12.5cm



© Frank Blackwell

Victorian wall painting of the Annunciation  
9 x 20cm



Nativity scene in the Shrine Chapel  
12 x 12cm



Christ Child from the Shrine Chapel  
13 x 13cm



Angels from the Shrine Chapel  
21 x 9.7cm



## Here to help you find and book the perfect holiday....



Arranging a holiday can be very frustrating and challenging. But with Full Circle Travel, it doesn't need to be.

- We are a local, independent travel agent with mature, professional and well-travelled consultants.
- You do not pay more for our service but get a lot more than booking direct.
- You can book with your favourite tour operator but book locally.
- We are ABTA and AITO members and ensure your money is safe in an uncertain world.
- We listen, we care and are passionate about finding you the perfect holiday.
- Search 'Full Circle Travel' at [www.trustpilot.co.uk](http://www.trustpilot.co.uk) to read what our clients say about us.

A selection of operators you can book with us at no extra cost to booking directly:

Club Med - Cox and Kings - Abercrombie and Kent - Mark Warner - Audley Travel - Explore - The Adventure Travel Company  
Royal Caribbean - Carrier - Western & Oriental - If Only - Beachcomber - Exodus - Kuoni - Viking River Cruises - Seabourn  
Riviera Travel - Silversea - Regent Seven Seas - Classic Collection - Prestige Holidays plus many more - please just ask.

Full Circle Travel, 59 St Marys Street, Wallingford, OX10 0EL

[www.fullcircletravel.co.uk](http://www.fullcircletravel.co.uk)

T: 01491 833227

E: [holiday@fullcircletravel.com](mailto:holiday@fullcircletravel.com)





## **Dorchester tennis keeping our community fit, healthy & entertained**

Be tempted into regular play on our stunning, freshly repainted tennis courts, also reconditioned and upgraded earlier this year, to meet high LTA standards. Don't miss this wonderful opportunity to participate in this great sport which can have marvellous beneficial effects on our mental health as well as keeping us in good physical shape. Join Dorchester Tennis Club to receive priority access to the courts, club sessions and entry to the 2021 draw for Wimbledon tickets. Popular adult coaching has just started; contact us for details of further sessions.

Brilliant pricing - £25 individual, £40 family membership - this year only.

All abilities very welcome

### **Wednesday**

10.00am – 12.30pm Open club mixed session

### **Friday**

10.30am – 12.30pm Ladies morning

### **Saturday**

Gentlemen's morning

### **Sunday**

10.30am to 12.30pm - Open club mixed session



Enquires to Chris Smith

[chriscsmith@btinternet.com](mailto:chriscsmith@btinternet.com)

Tel. 01865 341947





## Abbey Education Officer Farewell!

I am very sorry to say my farewells to you all, having been the Education Officer at Dorchester Abbey for just over 10 ½ years! I can hardly believe it, as the time seems to have flown by! I officially started my role on 1<sup>st</sup> January 2010 and my final official day was 15<sup>th</sup> September 2020. People have asked why I'm leaving, when I clearly love my job and all my special times at the Abbey. The reason is because I'd like to pursue some creative courses, which I would not be able to do whilst continuing to do both of my jobs (i.e. teaching in Oxford and working at the Abbey), so one of them, sadly, had to give!

I have to say from the very moment I started my role I was welcomed with open arms by everyone who met me. Offers of help and support were always there, from the less obvious like being involved with the local Dorchester dig and museum via the lovely John Metcalfe and Anne-Marie Joffrin, to Tim Cook shooting arrows over the Abbey beams and offering endless help in many other ways, to IT/Audio-Visual/organisational/marketing and the plethora of other skills of Nick and Steph Forman, to my helpful group of 'chaps' installing the 'Angels' on high. But there was also the less expected help in the form of the many people who supported the multitude of craft workshops we've staged for various events, but more particularly the amazing education volunteers such as Ellie Ribeiro and Gill Whitten, amongst others, without whom many of my school visits would not have been possible! It was thanks to Ellie we were able to develop our Roman Experience Day, a follow on from the Anglo-Saxon Experience days we began to stage in 2014, when the primary curriculum changed. Also a huge thanks to Gill for her knowledge of a lifetime as a teacher with her amazing ideas and her ability to put my vague concepts for workshops (such as the Shadow Puppets) into

action, making them fully come to life! There are many, many more people I'd like to thank, but if I were to do that the thin parish magazine of the Dorchester News would be more like the thick wad of the Yellow Pages!!





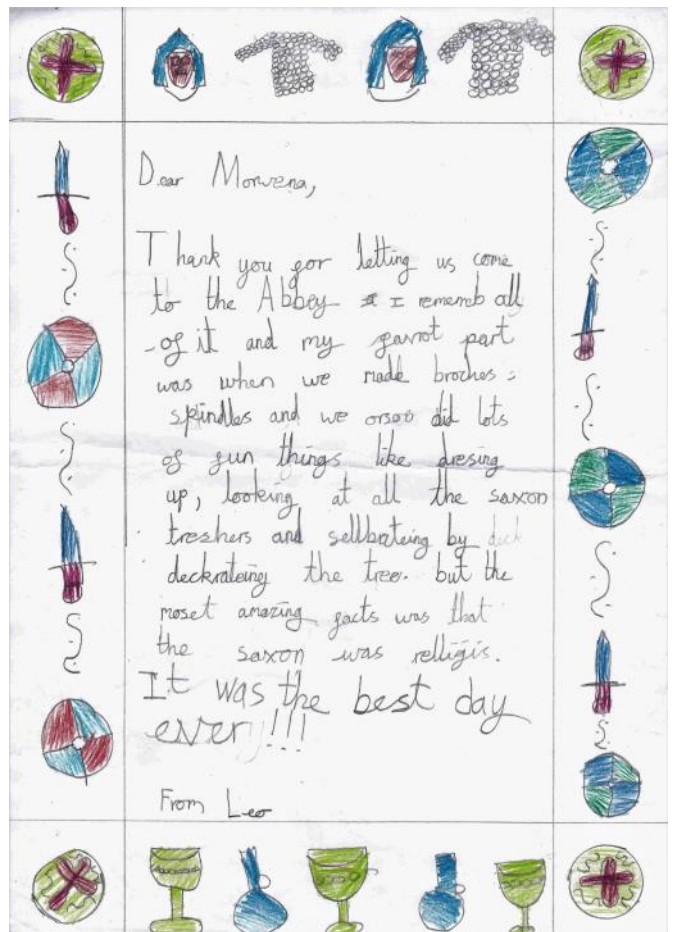


There have been some wonderful highlights to these 10 years that I will take away with me, especially my first organised schools event in 2011 of the interfaith primary Pilgrimage and Worship day, as well as being involved with the fantastic Friends' staging of the 2012 *John Piper and the Church* exhibition, which as an art historian was a sheer privilege! As mentioned above I enjoyed inventing special study days, especially our hugely popular Anglo-Saxon Experience Day. I also loved being able to stage interactive 'exhibition' events, in particular starting with the first enormously ambitious NARNIA in October-November 2016. But this turned out to be the most amazing unprecedented success, so much so that it led to the staging of other events, such as Angels and Light, but in particular to the restaging of NARNIA earlier this year, luckily just before the impact of Covid was felt. One of my abiding memories was of a child who had visited the first NARNIA exhibition, years later coming on a school visit to the Abbey but talking in such detail and with such excitement of their memories of their NARNIA experience. I have also had young PGCE teachers fondly remembering visiting the Abbey as pupils too!

I have learned a great deal during my time here, not just from a historical or educational perspective, but also from a personal level, with my interaction with the Dorchester congregation, parish and wider community. Coffee mornings became a weekly highlight, not just for the welcome chance to get a lovely cup of coffee but the fellowship engaged in with locals and visitors, often an opportunity for inspiring conversations, suggestions and offers of help!

It is with great sadness that I leave my role as Education Officer behind me, but hopefully I won't be leaving all of you special people behind, as I hope to see you off and on in my future visits to the village, a place I've always considered a home away from home!

**Margaret Craig,**  
Abbey Education Officer  
September 2020



**STEVE WILKINSON & SON**  
Est 1990  
Property maintenance in  
Dorchester area

**Painting: Interior and Exterior,  
Plastering, Stonework,  
Patios, Repointing brick & stone,  
Fencing.**

*Telephone: 01865 891554  
Mobile: 07885 538514*

**BRYANS LOCK SERVICES**  
Phone: 01865 340138. 01491 520820.  
01235 420742

Locks Supplied-Fitted-Serviced-Opened-Replaced for  
Timber- Aluminium- Steel, PVCu doors & windows.  
Keys cut to pattern.  
Keys to number for office furniture.  
Supply Safes, Document & Media Cabinets & Files  
Locks to Insurance Company Specifications.

Master Locksmiths Association Approved Company.  
Reg. No. 002623



# Are you up for the challenge? Dorchester October Run

Make the most of the autumn sunshine,  
get out and about around Dorchester.  
Run individually at any time during the  
month of October. **Closing date 31/10/20**



## Categories:

(male and female winner for each category)

- 3km – great for kids!
- fastest 5km
- most improved couch to 5k
- fastest 10km

## SIGN UP!

email:

[dorchesterfunrun@outlook.com](mailto:dorchesterfunrun@outlook.com)

## Entry £5



This event helps to raise money for Dorchester Abbey.

During lockdown, we haven't been able to run the usual events and services that provide an income to Dorchester Abbey, but bills have remained the same, so the Abbey needs help.



Join the "Run Dorchester" Facebook group!

Or visit our website: [www.dorchester-abbey.org.uk/funrun/](http://www.dorchester-abbey.org.uk/funrun/)





## Dorchester Abbey Museum

We're Open  
please come and see us!

In October we're open every  
Saturday 2.00-5.00 pm

Please be assured that you'll feel safe in the Museum as we have careful Covid-19 protection protocols in place: hand sanitizer, one-way system, social distancing, only a small number of people allowed entry at the same time, etc.

**Christmas shopping event  
Sat 7 and Sun 8 November  
2.00-4.00pm  
with mulled juice and mince  
pies!**

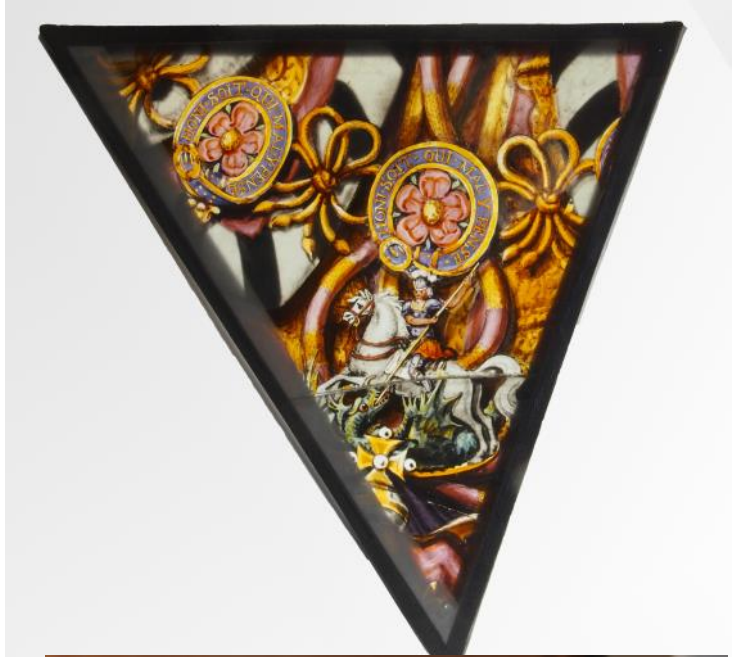
Come to the Museum Gift Shop and buy your Xmas cards and presents early, with mulled juice and mince pies! We have Abbey Xmas cards and others, as well as books, greeting cards and a wide range of small gifts for children and adults

### *Edith Stedman's Cookbook*

To mark the 60<sup>th</sup> anniversary of the Museum's opening by Edith, we've reissued her charming *Monastery Guest House Cook Book*

Price £7.50. Available from the Museum or Linda Hender, 11 Page Furlong, tel **01865 340032**, email: [linda.hender@btinternet.com](mailto:linda.hender@btinternet.com)

A few of the objects that you can see in  
Dorchester Abbey Museum





# The 2020 Autumn Produce



The first ever Dorchester Virtual Flower Show was <https://www.dorchester-on-thames.co.uk/posts/> where you can see all the entries and winners.

Forty-two people entered, mainly online, and some jam to the tearoom. All of those 'real' entries were a number of show entries was 78.

Thank you very much to everyone who entered and the Tearoom volunteers, to Dan Duke for web

Special thanks to the judges, and to the committee certainly different – slightly cross-eyed from computer fuelled day. We hope you enjoyed it, and we'll see instead of in cyberspace.



## Roll of

(all entries were judged from submitted)

### Children's Class – A Halloween Mask

1st Alastair Mucklow

### A collection of 4 different types of vegetables in a container.

1st Charles Dickerson, Winner of The Vegetable Collection Plate.

2nd Donna Watkin

3rd = Claire Flowers and Lawrence Petherbridge (joint entry)  
Sarah Taylor

Highly Commended Roger Seabrook, Margaret Broadbent, Nick Forman, David Parker

### One dahlia, any size

1st Sarah Taylor, Winner of The HC Smith Dahlia Cup

2nd Anne Thomson

3rd= Elizabeth Parker  
Donna Watkin

Highly Commended Charles Dickerson

### Flower Arranging – A Posy for Bees

1st Vera Baker, Winner of The Floral Art Cup

2nd Susan Jupp

3rd Fiona Pereira

### Sponge Cake, any flavour, buttercream filling. (judged from the real thing)

1st Susan Jupp, Winner of The Victoria Sandwich Award

2nd Jan Rimmer

3rd Steph Forman



# Autumn Flower and Cake Show

...a great success. Judge for yourself at: <http://www.dorchesternews.com/autumn-flower-show-tbc/>

...e accepted the invitation to bring real cake and kindly donated to the Abbey Tearoom. The total

...d supported the show. Thanks to Steph Forman for site help, and to Ian Brace at Dorchester News.

...for all their hard work. Running the show was a bit of a roller coaster instead of the normal adrenaline you get in the Spring, hopefully in the Village Hall



## Honour

(All photographs unless otherwise stated)

**A Pot of Jam, any flavour (judged from the real thing)**

- 1st Julie Evans
- 2nd Ellie Ribeiro
- 3rd Honor Juniper

**Photography, subject beginning with 'F'**

- 1st Ruth Clarke, Winner of The Blackwell Photography Cup for best photo in show
- 2nd Denise Line
- 3rd Ian Brace
- Highly Commended Christobal Conde

**Photography, a funny photo**

- 1st Gaynor Roberts
- 2nd Megan Parry
- 3rd Ian Brace

**Best kept Allotment (judged from the real thing)**

Simon Stafford, Winner of the Best Kept Allotment Tray







# How to make a Heavenly Host Angel



**"Heavenly Host, Dorchester on Thames"**, provides handmade angels for keen-eyed people to discover in the community and to place in their homes during the Advent and Christmas seasons. A label placed on the angel before blessing will give details of Advent, Christmas and Epiphany services. Crafters have an opportunity for mission through practical action. See Facebook page "Heavenly Host Dorchester on Thames". Call 01865 340905 with queries. The angels will be blessed at the Advent Sunday service in Dorchester Abbey. November 29th, 10.30am. Health & Safety rules will be adhered to.

**Thank you for making an angel for the project. Please return angel to Dorchester Abbey by Sunday 22 November, whether sewn up or not.** Please also return any unused yarn or stuffing to the Abbey so that we may recycle it.

The angel, if/when you complete it, may be given hair, face, halo and finished as you wish. Plain Angels are as welcome as fancier ones. If you prefer not to sew up your knitting we can complete it, but please return to Abbey by 22 Nov.

**Angel Knitting Pattern**, please aim to make no taller than 4"



**Materials** Some wool (any yarn, any colour)  
Knitting needles between size 10-8 (=3.25mm and 4.00mm).  
If you are sewing up the angel you will also need a large sewing needle; small amount of stuffing

<b>Pattern</b>	20	Purl
Cast on 48 stitches	21	K2TOG, K4*, repeat to end of row (20sts)
1 Knit	22	Purl
2 Purl	23	Knit
3 K2TOG, K10*, repeat to end of row	24	Purl
4 Purl	25	Knit
5 Knit	26	Purl
6 P2TOG, P9*, repeat to end of row	27	Knit
7 Knit	28	Here you can change your colour for head if you wish, Purl
8 Purl	29	Knit
9 K2TOG, K8*, repeat to end of row	30	Purl
10 Purl	31	Knit
11 Knit	32	Purl
12 P2TOG, P7*, repeat to end of row	33	Knit
13 Knit	34	Purl
14 Purl	35	K2TOG, repeat to end
15 K2TOG, K6*, repeat to end of row	36	Purl
16 Purl	37	Knit
17 Knit	38	P2TOG, repeat to end
18 P2TOG, P5*, repeat to end of row		
19 Knit		



**To make up:** Cut yarn about 12" long. Using large needle, thread yarn through stitches and tighten to create top of head, fasten with firm stitches. Turn angel inside out and sew up the head and body along the long edge, leaving the bottom (base) open. Fasten off securely. Place a small amount of stuffing inside, at the top, for the head. Thread yarn between the stitches at the neck and pull loosely together, fasten securely. Feel free to decorate further with hair, halo, features – or leave plain. All designs have their own charm.

**Wings, Option 1, Cast on 27 sts**

- 1 Knit
- 2 Knit
- 3 Decrease at each end (Knit)
- 4 Knit
- 5 Knit 12 rows, decrease at each end
- 6 Cast off



**Option 2 (more advanced)**

Knitted in short rows, yarn wrapped around the last stitch in middle of each ridge. For "w&t", bring yarn fwd, slip next stitch purlwise, yarn back, replace slipped stitch purlwise, yarn fwd, turn the work (w&t = wrap and turn)

Cast on 9 sts, then repeat following rows 4-5 times

- |   |              |   |             |
|---|--------------|---|-------------|
| 1 | K8, w&t, K8; | 2 | K6, w&t, K6 |
| 3 | K4, W&t, K4; | 4 | K2, w&t, K2 |
| 5 | K4, w&t, K4  | 6 | K6, W&t, K6 |





## Hydrotherapy pool under threat

Royal Berkshire Hospital Hydrotherapy pool is under threat of closure, even though many patients with conditions ranging from arthritis, muscular-skeletal and neurological conditions, lymphoedema, osteoporosis, neuropathy, polio, fibromyalgia, post hip replacement, etc. gain tremendous benefit from this therapy.

Hydrotherapy is different from swimming; it involves special exercises done in a pool with a physiotherapist, with water temperature at 33°-36°C (warmer than a typical swimming pool).

- Warmth of the water allows **muscles** to relax, helping patients to exercise more extensively
- Water supports weight, which increases the range of movement.
- Patients often exercise without pain, partly due to reduced muscle spasm in water.

More info on

<https://aftercancers.com/hydrotherapy-petition/>

Users say they would lose their sense of independence; not having to rely on walking aids, wheelchairs, etc. in the pool, they can carry out exercises that are impossible without water for support, especially if they are paraplegic, etc., and exercise improves their general-being.

**Currently Berks West Clinical Commissioning Group (BWCCG)** is seeking reader's views on future provision of hydro services at the Royal Berkshire Hospital. Users, physios, carers, parents, etc. They ask that you complete this survey and let BWCCG know you wish this pool to stay open [www.surveymonkey.co.uk/r/hydrotherapy](http://www.surveymonkey.co.uk/r/hydrotherapy)

**Verite Reily Collins**



Royal Berkshire Hospital Main Entrance



### Professional Building Advice

Home Surveys • RICS Regulated • Local Oxfordshire Based  
Advice on renovation work, extensions and building defects  
Construction Project Management  
Chartered Surveyors 30 yrs experience

**Mark G Bristow** MRICS, MAPM, Cert Mgt BSc Hons  
M 07912 476 636 T 01865 340 286  
[info@markbristow.co.uk](mailto:info@markbristow.co.uk)



## Do you care for a friend or relative?

Do you look after a friend or a relative in their home or yours? If so, Healthwatch Oxfordshire wants to hear from you!

As an independent champion for people who use health and social care, we want to know what it is like to be an unpaid carer and about the help and support you receive or need.

Even if you only help someone for a few hours or you don't see yourself as a 'carer', your views are important.

If you are aged 18 or over and care for an adult relative, friend or neighbour who is elderly or has an illness, disability, mental health problem or addiction please share your views by completing an anonymous survey at

[www.smartsurvey.co.uk/s/Unpaidcarers](http://www.smartsurvey.co.uk/s/Unpaidcarers)

If you'd prefer to talk this through over the phone, or to ask for a paper copy of the survey to be sent out to you, please call 01865 520520.

To find out more about Healthwatch Oxfordshire see

[www.healthwatchoxfordshire.co.uk](http://www.healthwatchoxfordshire.co.uk)



## Organise fuel bills, suppliers before winter

### Citizens Advice tip

Did you know that Citizens Advice has advisers who can help you sign up with a new fuel or electricity company, or switch to a better tariff?

There's no charge for our time and you won't be steered towards one particular supplier because we're impartial, having no links with any of them. We offer one-on-one sessions (by telephone at present) and we'll take a close look at your individual situation.

Now is the time to sort it out before winter closes in with cold autumn gales.

We can help you understand energy bills and various kinds of tariffs, supporting you if you want to switch and calculating the savings you might make. If you've fallen behind on bill payments, we can advise you on ways to reduce your debt by budgeting or trying a new payment scheme, for example.

We can also tell you about energy efficiency measures around the house, like draught-proofing windows and doors and installing LED light bulbs. Grants may be available to pay for thermal insulation.

We can check your benefit entitlements and help you to claim them if you're eligible. There are several helpful schemes like the Priority Services Register and the Warm Home Discount.

And if you have any complaints against your current supplier, we can help you resolve them.

You can find the relevant information on our website at [www.citizensadvice.org.uk/energy](http://www.citizensadvice.org.uk/energy) or phone our Adviceline on **0300 330 9042**.



# Remembering The George Hotel

To welcome John and Lesley Williams, the new landlord and landlady at The George, here are a few recollections of how it used to be.

The picture below of the rear of The George was taken in about 1890, so there's probably not many of use who remember that. The chickens have now gone, but it is still recognisable.

Jumping forward to about 1957, this sunny shot of the High St shows no traffic or parked vehicles and a flagpole complete with flag. The stage coach hadn't arrived by then.

Finally, from my personal collection, a bill from 1974. Proprietor Gerry Stonhill. A room for two for the night was £5 plus VAT at 8%. That's equal to £48 now plus VAT at 20% giving a total room cost of £58. The equivalent room is currently advertised at £69 inc VAT, so not too different. Breakfast, at £1.50 plus VAT (£1.62 in total) would be equal to £14.40 now after inflation. Included in the room, it is currently advertised at £17. So what cost me £7.02 when I stayed there in 1974, paid in cash (the only cards they took were American Express and Diner's Club) would now be £86, a 16% increase after inflation and the increase in VAT. But I bet the rooms are more comfortable now!

**THE GEORGE HOTEL  
& RESTAURANT**  
DORCHESTER-ON-THAMES  
OXFORDSHIRE · ENGLAND  
WARBOROUGH 404 or 479  
Oxford 340404 · Oxford 340084

Name BRACE

Table No. \_\_\_\_\_

Room No. 2

No. of Guests 2

Rate 5.00

Date \_\_\_\_\_

005.00 TAX  
N 001.50 FOM  
006.50B  
008.52 X  
007.024

VAT  
28256444

EXPLANATION OF CODE:  
A - Other Things  
B - Starters  
C - Main Dish and Vegetables  
D - Pudding  
L - Coffee  
N - Breakfast  
S - Luncheon  
T - Dinner  
W - Wine

PAID CASH  
29

**PAID**  
29 SEP 1974

WE ARE PLEASED TO ACCEPT  
YOUR AMERICAN EXPRESS OR  
DINERS CLUB CREDIT CARDS

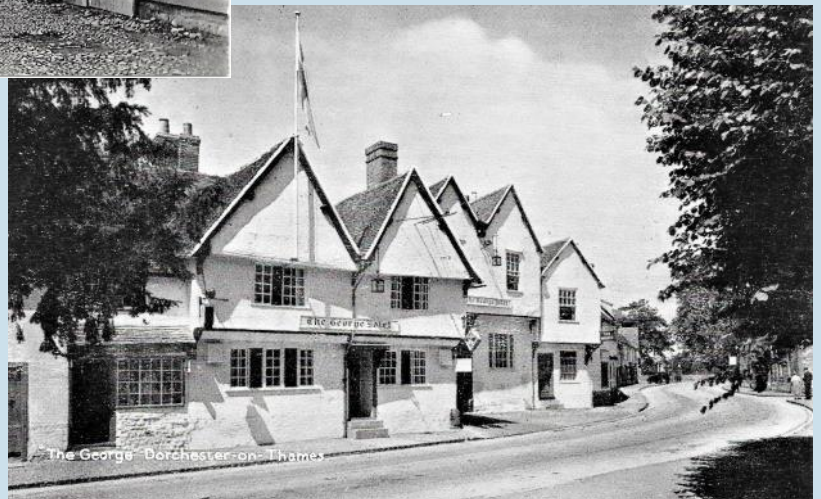
RESTAURANT CLOSURES ON SUNDAY  
NIGHT AND ALL DAY MONDAY

VAT Reg. No. 194-9031 43  
Proprietor Gerry Stonhill



George Inn Yard, Dorchester, c1890  
Oxfordshire County Council Libraries

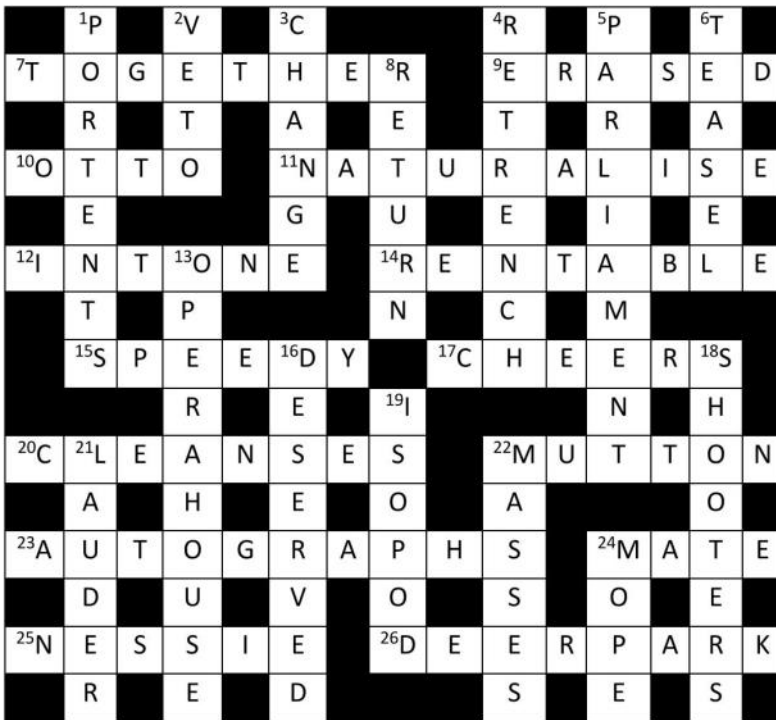
The George, Dorchester-on-Thames, 1957  
TVAP Postcards, Oxford





# Solution to Dorchester News Crossword No. 13

Compiled by Slider



## Advertising in Dorchester News

Costs per issue are for an eighth of a page £11.75 mono, £12.75 colour; quarter page £23.50 mono, £25.50 colour; half page £35.25 mono, £38.50 colour and full page £47.00 mono, £51.00 colour. There are ten issues per year.

Please send artwork to **dorchesternews@dorchesteronthames.co.uk** one week before the deadline for editorial copy given on page 2.

One-time adverts, please send a cheque, payable to 'Dorchester Abbey PCC', to Nick Forman, Willoughby House, 73 High Street, Dorchester-on-Thames, OX10 7HN.

## Mea culpa

Apologies to the Crossword fans who were unable to complete this one last month because the clue for 5 Down was missing! That was totally the fault of the editor. It was posted on Facebook and was in the downloadable version on the Abbey and village websites, so I hope that you found it there. And thank you to the vigilant Crossword fan who spotted the omission within hours of the Dorchester News appearing.



# Q SELF-STORAGE

[www.qselfstore.co.uk](http://www.qselfstore.co.uk)

(by 'H' Café, Berninsfield/  
Dorchester roundabout)

**We store:**




- \*→ 20ft secure units for household and business ----- £31.06 inc. VAT per week
- \*→ 10ft secure units for household and business ----- £21.40 inc. VAT per week
- \*→ Caravan, trailers and RV's ----- £600.00 inc. VAT per year
- \*→ Fenced open storage with or without 20ft container ----- POA

- \*\*\* Access: 24/7 - 365 days
- \*\*\* Entrance barrier
- \*\*\* Electronic coded gate
- \*\*\* Tracking CCTV
- \*\*\* Padlock supplied
- \*\*\* Excellent access, straight to unit doors
- \*\*\* HGV access
- \*\*\* HIAB collections for larger commercial items
- \*\*\* Household removal quotes

**Tel: 01235 847164 any time to view or book**





**ROY PASSEY BUILDERS**  
Interior and Exterior Builders and Decorators

Ashcroft, High Street, Benson, Wallingford, Oxon. OX10 6RP  
Tel: 01491 838797 • Mob: 07860 890925  
Email: roypassey@btconnect.com  
www.roypasseybuilders.co.uk



**REMLOC PLUMBING & HEATING LTD**  
Trading Standards Approved  
Gas Safe & CIPHE Registered

- Boiler Servicing
- Central Heating Installation
- General Plumbing
- No Job too Small
- Free Estimates
- Emergency Call-outs

01235 536345 / 07709 961 655  
[www.remloc.co.uk](http://www.remloc.co.uk) / email: [info@remloc.co.uk](mailto:info@remloc.co.uk)



**HOWARD CHADWICK FUNERAL SERVICE**  
A caring family owned and managed Funeral Service

- Dedicated Private Chapel of Rest •
- Golden Charter Pre-Paid Funeral Plans •
- Specialists in Memorial Stones and Designs •

**Benson Lane, Crowmarsh Gifford  
Wallingford OX10 8ED**  
Tel: 01491 825222  
[www.chadwickfuneralservice.co.uk](http://www.chadwickfuneralservice.co.uk)





**CHIMNEY SWEEPING COMPANY LTD**

- ★ NO FUSS ★
- ★ NO MESS ★
- ★ NO PROBLEM ★

Oxford	01865 772 996
Stadhampton	01865 400244
Deddington	01869 337500
Mobile	07711 443050

**JOHN L. FISHER**  
CARPENTRY,  
FITTED WARDROBES,  
BOOKCASES & OFFICES

01865 343511  
07860 505447  
[johnfisher19@icloud.com](mailto:johnfisher19@icloud.com)

**The Acupuncture Barn**  
Acupuncture for Families  
Appointments now available for:  
Acupuncture, Facial Acupuncture, Moxa and Cupping treatments  
Chinese Medicine 5-Elements approach to treating you as a whole  
Body, Mind & Spirit  
Licenced Treatment Room:  
High Street, Chalgrove, OX44 7ST

**07879 403800**  
[acupuncturebarn.co.uk](http://acupuncturebarn.co.uk)

Flexible times by appointment






**Logs for Sale**  
Martin Drew  
01865 343378 or 07774 170727



**T.W Hayden  
Heating Services**

Tel: 01865340720  
Mobile: 07813904055  
E-mail: [Twhayden@tiscali.co.uk](mailto:Twhayden@tiscali.co.uk)

All plumbing and heating works undertaken.  
Free estimates.

15 Fane Drive, Berinsfield,  
Wallingford, Oxford, OX10 7NB

## Parish Council Notices

### Co-Option To Fill Parish Council Vacancy

The Parish Council has received permission to fill the Casual Vacancy that arose when Cllr Viviane Quirke resigned due to pressure of other work by the process of co-option.

All those interested in being considered for this vacancy should contact the Clerk before the Council's next meeting which takes place on **Wednesday 14 October**.

### Website Accessibility

The Parish Council has taken steps to ensure that the Village website conforms with the new website accessibility regulations which took effect on 23 September. It is important that everyone can easily access information provided by local councils including those with disabilities.

The Parish Council asks that those submitting copy for inclusion on the Village website should first seek information about web accessibility from their usual on-line information provider.

### Council Meetings

The October Parish Council Meeting will take place on **Wednesday 14 October** and will commence at 7.30pm. The Agenda will be posted on Village Noticeboards and on the Parish Council section of the Village website – [www.dorchesteronthames.co.uk](http://www.dorchesteronthames.co.uk) – three working days in advance.

It is expected that this meeting will be held 'remotely' but **all** Parish Council meetings are open to the public and any resident who wishes to raise any matter of concern is welcome to do so at the start of the meeting. Please contact the Clerk no later than 3.00pm on the afternoon before the meeting so that the necessary access arrangements can be made

### Contacting the Parish Council

The Parish Clerk is Geoffrey Russell of The Pigeons (next to The Fleur de Lys), 5-7 High Street, Dorchester-on-Thames OX10 7HH

Telephone (during normal office hours, please, unless an emergency) **07745 311439**. Texts are always welcome.  
e-mail: [parishclerk@dorchesteronthames.co.uk](mailto:parishclerk@dorchesteronthames.co.uk)

Cllr Mark Williams, the Chairman, can be contacted via [chairman@dorchesteronthames.co.uk](mailto:chairman@dorchesteronthames.co.uk)



The parish council plays an important role in helping make Dorchester what we, the residents want to be. As well as overseeing the management of the parish's property such as the rec, the cemetery and allotments, we help support local priorities such as cleaning our streets, helping to maintain our footpaths and offering an opinion to the planning authorities on building plans in our area. We are usually a band of nine councillors but one of our number has had to withdraw due to work commitments. So we have a vacancy to co-opt an additional councillor. New and alternative voices are vital to what we do so if you would like to talk about joining our number please do respond to the advert in Dorchester News this month. We meet once a month in the evening so putting yourself forward really won't take over your life but I hope it will be fun and rewarding for you.

Last month I highlighted our support for the government's initiative to clean up Britain in September. Thank you to those who have volunteered and walked our lanes and paths with litter pickers and collection bags, we appreciate your efforts. There will be a full report about what has been collected in next month's edition of Dorchester News. And, of course, there is no need to stop in September, a stroll to fill a bag with crisp packets and drinks bottles is strangely satisfying, so please do give it a go.

**Mark Williams**  
Chairman DoT Parish Council  
[chairman@dorchesteronthames.co.uk](mailto:chairman@dorchesteronthames.co.uk)

For information about the Parish Council go to <https://www.dorchester-on-thames.co.uk/parish-council/>  
This includes the minutes of all Parish Council Meetings and financial information such as monthly bank balances and payments as well as a record of all planning matters upon which the Parish Council has been consulted and reports from our County and District Councillors.

## Dorchester Window Cleaning Service

We provide a friendly reliable service every 5-6 weeks.  
Free quote—no obligation. Est 1990

Contact Craig Taylor  
Tel: **01235 512881**. Mob: **07778 661548**  
[www.elitewindowcleaningservice.com](http://www.elitewindowcleaningservice.com)

A bill can be left for postal payment if you are not home.  
Online payment also welcome.  
Other services include: Conservatory roof cleaning; Fascia cleaning; Gutters unblocked & cleaned out.

**Graceful Gardens**  
**DESIGN**  
Gardening Service  
by RHS qualified female gardener  
Garden design / Plans / Landscaping / Planting  
Demonstrations / Consultations / Pruning / beds and borders...  
**Call 07814 691040**  
email: [sundaycarrigan@gmail.com](mailto:sundaycarrigan@gmail.com)  
[www.gracefulgardens.vpweb.co.uk](http://www.gracefulgardens.vpweb.co.uk)  
*Quotations by appointment      References available*  
*Wallingford and surrounding villages covered*



Busy Baskets Nursery trading as:




**Purely Plants**

A multitude of varieties & colours of bedding, basket, border and patio plants all grown on the nursery

Best selection of Winter/Spring flowering Pansies

Basket & Container Planting Service

Autumn Season Sept - Nov • Open 7 days a week 10am - 5pm  
142a Wantage Road, Wallingford, OX10 0LU.

**01491 833 831 www.purelyplants.co.uk**

**AKT** | **Planning+Architecture**  
Chartered Town Planners and Architects

AKT is an established local practice in Dorchester on Thames with a wealth of experience in all aspects of planning and architecture. We pride ourselves in providing a professional and bespoke service and look forward to discussing your project.



Contact Sarah or Paul for a free informal chat.  
Tel: 01865 340989  
[www.archkingtech.co.uk](http://www.archkingtech.co.uk)

A member of the Royal Town Planning Institute + Royal Institute of British Architects



**THE SEWING LADY - Local Seamstress**  
Tel: 01235 847846 Mob: 07754265326

Sewing services including ...alterations and mending, zippers and hems, ... invisible mending, dresses, coats, jackets, ball gowns, party, wedding denim, suede plus more...

Check out my work...




[www.simplycoralwood.co.uk](http://www.simplycoralwood.co.uk)  
[simplycoralwood@gmail.com](mailto:simplycoralwood@gmail.com)

**FOR A BEAUTIFUL GARDEN**

Choose from our wide range of quality garden services: design and construction, plants and maintenance. We tailor-make our service for you.

For a free, no-obligation visit and written estimate from RHS qualified staff, call **01865 891634**, or email [info@brannfordsgardens.co.uk](mailto:info@brannfordsgardens.co.uk)  
Full details at [www.brannfordsgardens.co.uk](http://www.brannfordsgardens.co.uk)



**Ben Smith**  
**Carpentry & Building**  
07803533163 01865 361171 07884103142  
[Enquiries@bscarpentry.co.uk](mailto:Enquiries@bscarpentry.co.uk)  
Carpentry, Joinery & Building Contractors  
Suppliers & Installers of Windows, Doors & Conservatories  
Purpose Made Joinery Products  
Kitchen Furniture

We undertake all building works, Including the design through to local authority approval if required.



References Available Upon Request




VAT REG NO: 212 6529 30




**Bell Motors**

Behind H Cafe at the Berinsfield roundabout

MOT's while you wait  
**£15 discount on MOT's when you quote this advert**

On site MOT bay and Workshops.  
All makes and models catered for  
**Need a service give us a call.**

Electronic diagnostics:~ engine management, ABS, air bags all undertaken.

Need a SERVICE. (**10% discount** when you quote this advert)  
We supply and fit exhausts, brakes, batteries  
We will carry out any MOT work required. (tyres and air con please call for quote)

**Free collection of your vehicle, or we will take you home and collect you upon completion.**

We will come out for breakdowns/recovery as needed.  
Welding, you break it we will try and repair it, and not just your car!!

Garden machinery not starting we may be able to help?  
All credit and debit cards welcome.

MOT`s 01865 341039  
WORKSHOP 01865 341155  
MOBILE 07931970392

## From your District Councillor... ...Robin Bennett



### **New emergency assistance grant available**

There's a new fund available for voluntary and community groups who are helping people struggling to afford food and other essential provisions as a result of Covid-19.

The money is available in the form of emergency assistance grants of up to £5,000 and if you are working with any constituted groups like voluntary covid-19 community response groups or mutual aid groups, you can apply. You can find out more information on our website, or contact me directly.

### **Business Grant update**

Across South Oxfordshire we've given out well over £1 million in Discretionary Business Grants.

The fund was provided to us by the government to help support small and micro-businesses affected by Covid-19, particularly those not eligible for other business grants. Over the last four months our Economic Development and several other departments have worked incredibly hard to process the applications and make the payments quickly. In South Oxfordshire 107 micro and small businesses each received a £10,000 grant, making a total of £1,070,000 that we were able to give out.

### **New website goes live**

We've soft-launched our new council website to gather public feedback, and we'd love to know what you think of it. If you'd like to try the site out, please head to

<http://www.southoxon.gov.uk/news/2020/2020-08/try-out-our-new-website-and-let-us-know-what-you-think>

### **Inspector publishes preliminary findings into South Oxfordshire Local Plan**

The Council has received the Inspector's preliminary findings on the emerging South Oxfordshire Local Plan. The Planning Inspector Jonathan Bore sent a letter, which sets out his preliminary conclusions on matters that arose during the examination of the emerging Plan, which is being progressed following a legal Direction from controversial Secretary of State Robert Jenrick, preventing our administration from significantly influencing the content of the plan.

Disappointingly for those of us who contributed to the examination and presented arguments, as I did, the inspector did not choose to remove any of the green belt sites from the plan, although some improvements have been made to the plan's environmental policies.

There will be an opportunity this autumn for the public to comment on the main modifications requested by the

Inspector. Mr Bore's letter is available on the council's website at [www.southoxon.gov.uk/examination](http://www.southoxon.gov.uk/examination).

The council is also responding to the government's consultation on a new Planning system – I have concerns about lack of democratic accountability in the proposals and what they may mean for Neighbourhood Development Plans, which many communities spend hours and indeed years preparing. There is also no clear mechanism on how affordable and social housing will be provided under the new system.

### **Berinsfield Garden Village**

A funding bid has been prepared for Berinsfield Garden Village in response to an invitation from Homes England for 2020-21 programme funding. A staffing structure has been approved for the Garden Communities team and the process of hiring has begun. We anticipate having our team in place by late Autumn and will begin forming a community working group once we have officers in place to organise that work.

Emily Cockle has been appointed as head of development and regeneration, which is the department I'm responsible for, and will be overseeing the project. She joins us from Ridge and Partners, where she established a development and regeneration service, and is a member of the Chartered Institute of Housing, the Royal Institution of Chartered Surveyors and the Institute of Place Management.

[Robin.Bennett@southoxon.gov.uk](mailto:Robin.Bennett@southoxon.gov.uk)

tel. 01865 858680

m. 07979 646815

BODY CONTROL  
PILATES®

**CLASSES ARE BACK IN VENUES WITH SOCIAL DISTANCING**

**DORCHESTER, BENSON, RADLEY**

**BCP level 3 certified teacher and Low Back Pain Practitioner; specialising in back & joint care, sports rehab, pre & post natal and Parkinsons Disease**

Beginners, Mixed Ability, Runners & Cycling specific, LiveStream classes & 121 sessions available for personalised programmes

To book contact Claire on 07801 298 978

[www.millstreampilates.co.uk](http://www.millstreampilates.co.uk)

[claire@millstreampilates.co.uk](mailto:claire@millstreampilates.co.uk)





T: 01865 890548

F: 01865 890198

E: info@fourwindsgarage.com

## Local, Professional Vehicle Technicians

- MOT's
- Servicing
- Repairs
- Diagnostics
- Bodywork
- Welding
- Free collection and delivery
- All makes covered



## ARBOCARE TREE SURGERY LTD

Tree surgery  
Landscaping  
Grounds Maintenance



**Qualified, insured,  
experienced arborists**

- Contractors to the National Trust
  - Surveys & reports
  - Patios & Decking
  - Turfing & Fencing

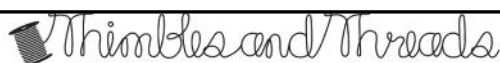
*For more details contact us on:*

Freephone **0808 155 5815**

Mobile **07778 811136**

Email **mharvey31@gmail.com**

**www.arbocare.co.uk**



### Bespoke Curtains and Blinds

Based locally I am able to make and/or supply:

- Quality handmade curtains, roman blinds & cushions
  - A huge selection of fabrics
  - Pelmet & Headboards
  - Poles and curtain tracks
- Roller, vertical & venetian blinds
  - Plantation Shutters
- Bed valances & Bespoke lampshades
- Full professional measure and fit offered

Enquiries welcome please call Sharene on 07811 296 454 for a free initial consultation

Email [info@thimblesandthreads.co.uk](mailto:info@thimblesandthreads.co.uk)

[www.thimblesandthreads.co.uk](http://www.thimblesandthreads.co.uk)



## L B Plumbing

Toilets, taps, immersions,  
showers, leaks and more,  
**no job too small**

Fully insured, free estimates,  
no call out charge

**Call Lee 01491 834484/  
07981642688**

# From your County Councillor... ...Lorraine Lindsay-Gale



## Public Health – COVID-19

In the seven days up to 28 August, there has been a total of 63 confirmed COVID-19 cases in Oxfordshire. This is a decrease from 88 cases in the previous week.

- This is equivalent to a weekly rate of new cases of 9.1 per 100,000 residents.
- The majority of the new cases are in Oxford, where the number has fallen from 41 to 23.
- The weekly rate for Oxford currently stands at 15.1 cases per 100,000 population, which sees the city moving to a yellow alert status, down from amber the previous week.
- The increase is predominantly among young people aged between 18 and 29. The increase can be partly attributed to people returning from holidays in Europe, where cases of the virus are rising, and partly to lower levels of adherence to social distancing.

Total cases by District: Cherwell 751, Oxford 1020, South Oxfordshire 650, Vale of White Horse 534, West Oxfordshire 564 and Oxfordshire 3,519

## Our response

This continues to be a fast-moving situation, and the County Council Public Health Surveillance Unit is monitoring it very closely. With many schools now back, the Universities welcoming back students in the coming weeks, and people returning from holiday in Europe where cases are rising, there is a real need for everyone to remain vigilant. The Council is therefore asking people **not to let their guard down** and to continue taking preventative measures. If the figures rise, then local control measures may need to be introduced.

## New bus service between Berinsfield and Abingdon

I am delighted that after many months of campaigning on behalf of local residents, from 1 September 2020, Thames Travel service 45 between Abingdon and Culham was extended to serve Berinsfield, Oxford Science Park and Cowley thanks to funding from the Government's Supported Bus Services Fund (SBSF) and Section 106 planning agreement funds from Culham Science Centre.

The service operates broadly every two hours on Mondays to Fridays, offering peak and off-peak connections to town and district centres and major employment parks.

A school transport service is also provided between Berinsfield and three secondary schools in Abingdon; Larkmead, Fitzharry's and John Mason. This is not currently part of the public timetable due to social distancing requirements but it is hoped to offer these journeys to everyone in the future.

The service has been procured on an initial two-year contract

## Welcoming children back to school safely

The new academic year has arrived and our Learning & School Improvement team have been working closely with schools and colleges to make sure that all children are welcomed back safely.

I recognise that some parents may feel anxious, particularly in light of the number of COVID-19 cases in Oxford. We have therefore written to parents and carers across Oxfordshire to reassure them about the preparations that have taken place for the safe return of children. 94% of schools in Oxfordshire have remained open since the start of lockdown and we have not seen any significant outbreaks during this time. Moreover, research by Public Health England shows that coronavirus outbreaks and infections in schools and early years settings are very rare.

Through our #backtoschoolsafely campaign, the Council is also encouraging parents and children to adopt active travel where possible, including walking, cycling or scooting to school. If there are any congestion issues close to your local schools, then please do report concerns to our dedicated email address: [schoolsactivetravel@oxfordshire.gov.uk](mailto:schoolsactivetravel@oxfordshire.gov.uk)

For those children who are entitled to home to school transport, the OCC Transport Recovery Group has liaised with schools to identify a safe service. This has included a total of **40 additional routes** to ensure children from more than one school do not travel together.

To date our children's return to school is going well. Oxfordshire Schools attendance was 87.8% in the first week of term against 81.5% nationally.

The attendance figure for Pupils with Education & Health Care Plans is 87.0%, pupils with a Social Worker – 88.6%, and Children that the County Council Cares For is just under 90%.

and it is hoped that it will be sufficiently successful to be extended beyond this period. I do hope residents will use the 45, because as with so many things nowadays, it's use it, or lose it.

A copy of the public timetable is available at <https://www.thames-travel.co.uk/routes/45>.

The schools timetable is available at <https://www.thames-travel.co.uk/school-services/45s/> but remember this journey is currently for pupils only.

I would like to say a very public 'thank you' to Jon Alcantara, who stepped up and provided a school bus service for the Berinsfield children over the last few years. He managed to operate a route that neither the County Council nor Thames Travel had been able to do in the past. I'm very grateful for his public spirited, can do attitude that impressed all those who have worked with him at OCC.





From your MP...

...John Howell

As I write in the middle of September we are facing tighter measures to try to halt the recent rise in COVID cases. This is disappointing but not entirely unanticipated. There are, of course, many views on how the Government should respond to these issues and there will be some who are not happy with new measures either because they think they are not strong enough or because they find them too restrictive. Several very specific scenarios have been raised with me for guidance on what to do but it is impossible for the Government to set out the requirements in every individual situation. The key has to be in the distancing and hygiene measures that have been set out.

Reports of scams in relation to COVID Track and Trace are worrying particularly where people are trying to get money for supposed tests. Scams also risk undermining the genuine process which is important to help control the spread of the virus. There is no charge for Government COVID tests and NHS Track and Trace will not ask for any sort of payment details, pin numbers or to download anything from the internet.

Now to a completely different issue that I know is dear to the hearts of many in the constituency – planning. The Government has published proposals on reforms to the planning system and the consultation is open until the end of October. I am pleased to see this as I think that radical reform of the planning system is necessary. The proposals, if accepted, will improve the way that councillors and local communities carry out an important local planning function – the production of a local plan. I mention local communities here because Neighbourhood Plans remain crucial for the future of the planning system and I am pleased that the Secretary of State has confirmed ongoing support for Neighbourhood Planning. I know it will be welcomed by the many communities that have put a huge amount of effort into setting out their own vision for their future through a Neighbourhood Plan.

Whilst on the subject of planning, many of you will know that I have long defended the Green Belt and look forward to being able to continue to do so under the new system. I was disappointed that the Planning Inspector examining the South Oxfordshire Local Plan seems set to approve the release of sites within the Green Belt for development. However it is the

job of the Inspector to determine this against all the other aspects of the plan and it is good to see that the designation of the land as Green Belt has led to a requirement that if Green Belt land is released then there should be compensatory improvements to the environmental quality and accessibility of the remaining Green Belt land, with measures supported by evidence of landscape, biodiversity or recreational needs and opportunities. Things do change over time and we cannot preserve things in aspic when competing needs create opposing demands but these protections do ensure that mitigations are put in place.

Another important issue on the agenda at present is what has become known as the green recovery – that as we emerge out of COVID restrictions and get the economy going again we learn from the environmental benefits of lockdown. This is something that has to be reflected across Government Departments and I continue to work with colleagues to be mindful of this as any new proposals come forward.

Finally, I am pleased that we have reached agreement in principle for a free trade deal with Japan. The UK-Japan Comprehensive Economic Partnership Agreement was agreed in principle by Japan's Foreign Minister. This deepens the economic partnership between two democratic island nations who believe in the fundamental principle of free and fair trade and provides additional benefits for UK companies. It is also a sign that we will be able to make trade deals as I have always believed we would.

Now that Parliament has returned there is a busy programme. On many issues I make comment on my website so please do have a look. [www.johnhowell.org.uk](http://www.johnhowell.org.uk). If you have an issue that you would like to raise with me, if possible, please email me at [john.howell.mp@parliament.uk](mailto:john.howell.mp@parliament.uk). If you cannot email you can write to me at my constituency office - PO Box 84, Watlington, OX49 5XD.

If you would like to receive my periodic electronic newsletters, and briefings on specific issues, please visit my website [www.johnhowell.org.uk](http://www.johnhowell.org.uk) and subscribe at the link on the home page.



## Wallingford Museum Bookshop

We are pleased to announce that Wallingford Museum's bookshop has re-opened – social distancing and precautionary measures will be observed.

This is a good opportunity for book-lovers and present-seekers to make a point of visiting the bookstall whilst Wallingford Museum remains temporarily closed.

We have an excellent selection of good second-hand books (both fiction and non-fiction) at sensible prices. We'll be open every Friday and Saturday from 10.30 to 1.00.

*As a re-opening offer all books will be £1 each (cash), but do pay more if you wish!*

We look forward to seeing you - it's free to browse!

[www.wallingfordmuseum.org.uk](http://www.wallingfordmuseum.org.uk)

Isabella Darby



## Wallingford Guided Historical walks are now on offer!

Wallingford Museum's experienced team are now taking bookings for historical tours of the town or castle.

These tours will follow government guidelines for Covid-19 prevention, with social distancing in place throughout and any other necessary precautions.

### To Book a tour

All bookings are via email: [pburton6@talktalk.net](mailto:pburton6@talktalk.net)

Request a day and time to suit you and we will do our best to arrange it.

Request either a Town or a Castle walk.

You will be contacted by email to confirm or adjust arrangements.

### Arrangements

Tours will meet beneath the Town Hall in Wallingford Market Place.

You will be in a group of no more than six people (plus Guide) on any tour.

Cost is £10 per head, for a tour lasting between 90-120 mins.

Payment must be made in cash on the day.

**Exact money must be handed to the guide in an open envelope on which you have written a name and phone number for each participant, to allow compliance for Track and Trace.**

We shall look forward to hearing from you.

(For General Museum enquiries please contact the curator on **01491 651127**)

[www.wallingfordmuseum.org.uk](http://www.wallingfordmuseum.org.uk)



CORN EXCHANGE WALLINGFORD

**Cinema:** All regular performances start at 7.30pm unless otherwise stated. Tickets £8 for adults, £5 for under 15 unless otherwise stated.

There are now some cinema bookings available and we will be adding more films after we have been able to ascertain the level of demand. Please look on [www.cornexchange.org.uk](http://www.cornexchange.org.uk) for further programme updates.

All the Covid-19 safety information is available on the website. Please take a moment to read this before you come to a performance.

### September

Wed 30 **Matthew Bourne's The Red Shoes**  
(Filmed live at Sadler's Wells, London, in January 2020) Tickets £12 (adult), £10 (under 18s)

### October

Fri 2 **Babyteeth** (15)

Sat 3 **The Snow Queen – Mirrorlands** (U) 2.30pm

## St Mary's Dental Practice

Dr Ash Ratti (BDS Hons) Kings College London

[www.stmarysdental.co.uk](http://www.stmarysdental.co.uk)

21a St Mary's Street

Wallingford Oxon OX10 0EW

Tel **01491 825252**

We are a family orientated Practice located in the centre of Wallingford providing care and consideration from all members of my team to help provide you with all aspects of your dental requirements.

For further information, or make an appointment, please call my Receptionist on **01491 825252**



## Day by day

Sun 4 Oct	Bishop Colin's farewell to Dorchester Team 10.30am
Wed 7 Oct	<b>Chiropodist</b> Village Hall
Sun 11 Oct	8.00am Holy Communion (1662)
Wed 14 Oct	<b>Parish Council Meeting</b> 7.30pm Online
Sat 17 Oct	<b>Concert</b> OSJ 7.30pm Dorchester Abbey
Wed 21 Oct	<b>Chiropodist</b> Village Hall
Sun 25 Oct	8.00am Holy Communion (1662)  Holy Communion – Bible Sunday 10.30am



## Weekly events at the Village Hall

Monday	Yoga. 9.30am
	Pilates 6.00pm
Tuesday	Yoga 7.00pm
Wednesday	Pilates 6.30pm
Thursday	Yoga 6.00pm

## Weekly events

Monday	DADS Play reading 7.30pm Online
Tuesday	Coffee Moring 10.30am Online
Wednesday	Mobile Post Office 1.00-3.00pm but may vary due to Covid 19 Outside Co-op

Regular events also appear in the Parish Council's website:  
[www.dorchesteronthames.co.uk](http://www.dorchesteronthames.co.uk)

## Parish Registers

### Holy Matrimony

5 Sept Benjamin Hopwood and  
Emma Simpson

### Funeral

24 August Sheila De-Maine

See page 4 for more information about services at Dorchester Abbey and elsewhere in the team.

For St Birinus RC Church go to:  
[www.stbirinus.co.uk](http://www.stbirinus.co.uk)

## The White Hart

Dorchester on Thames  
01865 340074



## Market Menu

Available Monday to Friday Lunchtime  
Early Dinner Weekdays 6pm-7pm

*Come along to the White Hart and enjoy a delicious two course menu for only £15 (three courses £18). This special menu is available Monday to Friday for early dining with orders taken before 7pm and at lunchtimes.*

*(Restaurant Club discount not applicable)*

[www.white-hart-hotel-dorchester.co.uk](http://www.white-hart-hotel-dorchester.co.uk)



Jenks Oxford are based here in Dorchester and so are convenient for all your tree needs.

Ask for a free site consultation and quotation on our full range of general and specialist services from our qualified professional staff.

Tree felling & removal - Pruning - Tree surveys - Diseased or unstable trees - Stump removal - Hedge cutting... and much more, just ask, and with £10 million public liability insurance for peace of mind.



FREEPHONE  
**0800 458 3328**  
info@jenksgroup.co.uk www.jenksgroup.co.uk

Proud to sponsor **FOOTSTEPS**  
and DOT Under 10's football team

County Council approved. Arboricultural Association Approved.  
NPTC & Lantra Qualified. **WHICH?** Approved.

## CONTACTING THE POLICE

To report a non-emergency crime, or to give information to Thames Valley Police, call **101**. Alternatively, call Crimestoppers anonymously on **0800 555111**. In the event of an emergency dial **999**.

## HEALTH SERVICES DIRECT LINE TO URGENT LOCAL HEALTH SERVICES

Dial **111** to access urgent local NHS health care services. Where possible, they will book you an appointment or transfer you to the people you need to speak to or send an ambulance if they think you need one. For non-urgent health needs you should contact your GP in the usual way.

## MINOR INJURIES

The Minor Injuries Unit at Abingdon Hospital, Marcham Road, daily from 10.00 am to 10.30 pm: **01865 903476**.

## A&E

The nearest A&E units are at the John Radcliffe Hospital in Oxford (**01865 741166**) and the Royal Berkshire in Reading (**01183 225111**)

## SURGERIES

Berinsfield Health Centre: **01865 340558**  
Clifton Hampden: **01865 407888**  
Millstream Benson: **01491 838286**

## ROOM HIRE

### ABBAY GUEST HOUSE BOOKINGS

To hire the Abbey Guest House for private functions, meetings, exhibitions, etc, contact Kate Herbert on **01865 340007**, email [admin2@dorchester-abbey.org.uk](mailto:admin2@dorchester-abbey.org.uk)

## HIRE OF DORCHESTER VILLAGE HALL

To hire our Village Hall, contact Kate Harris [bookings@dotvh.org.uk](mailto:bookings@dotvh.org.uk) or **01865 689452**.

Please telephone at least 24 hours in advance to arrange collection of the key.

## FAULTS AND COMPLAINTS POTHOLE, STREET OR ROAD PROBLEMS

Abandoned vehicles, dog fouling, flyposting or graffiti, flytipping or litter, street cleaning, such as broken glass in a cycle lane, unlit lampposts, potholes can be reported on [fixmystreet.oxfordshire.gov.uk](http://fixmystreet.oxfordshire.gov.uk). In an emergency, call **0345 310 1111**.

## BLOCKED DRAINS

Ring Thames Water for blocked drains on **0800 316 9800**. Callers will be asked for the postcode of the address where the drains are blocked.

## REFUSE COLLECTION

If your rubbish is not collected on the due date contact the contractor direct. Call **03000 610610** and the website: [www.morerecycling.co.uk](http://www.morerecycling.co.uk)

## BERINSFIELD LIBRARY

Green Furlong, Berinsfield **01865 340771**  
Free Internet access. DVDs can be ordered.

## OPENING HOURS

Mon - closed  
Tues, Wed, Fri 10.00am – 12.30pm  
Tues 2.00–5.00pm  
Wed, Thurs 2.00–5.00pm  
Fri 2.00–5.00pm  
Sat 10.00am – 12.30pm

## ANIMAL WELFARE

RSPCA (wildlife): **0300 123 0206**  
St Tiggywinkles animal rescue: **01844 292292**  
Swan Lifeline: **01753 859397**

## Useful Information

### TRANSPORT DORCHESTER FLYER

Suspended until further notice.

### OTHER BUS SERVICES

Services X38, X39 X40 go every 20 minutes from the bypass at the end of Drayton Road to Oxford and Wallingford. Information about bus services, both local and national, is available from [www.traveline.info](http://www.traveline.info), and **0871 200 2233**. Reduced services currently being run.

### AGE UK

The UK's largest charity working with older people For help and advice etc. go to [www.ageuk.org.uk](http://www.ageuk.org.uk)

### WALLINGFORD VOLUNTEER CENTRE

WVC Volunteers provide help for the elderly, disabled or vulnerable, especially by giving lifts to medical appointments at hospitals in Oxford, Abingdon and Reading. You need to register as a client. Contact the Centre for more information. **01491 836345**

[www.wallingford.volunteercentre@gmail.com](mailto:www.wallingford.volunteercentre@gmail.com)

### CONTACTING THE PARISH COUNCIL

The Parish Clerk is Geoffrey Russell of The Pigeons (next to The Fleur de Lys), High Street, Dorchester on Thames OX10 7HH; **07745 311439** (during normal office hours, please, unless an emergency); [parishclerk@dorchesteronthames.co.uk](mailto:parishclerk@dorchesteronthames.co.uk).

### MOBILE POST OFFICE

The Mobile Post office stops outside the Co-op every Wednesday between 1.00 and 3.00pm but may vary

### RAF BENSON

For information on flying schedules and night flying, [www.raf.mod.uk/our-organisation/stations/raf-benson/documents/raf-benson-flying-programme/](http://www.raf.mod.uk/our-organisation/stations/raf-benson/documents/raf-benson-flying-programme/).

## USEFUL CONTACTS

### ANGLICAN PRIEST

Dorchester Rectory  
*Revd. Canon Sue Booy*  
**01865 340007**

### ABBAY E-MAIL:

[admin@dorchester-abbey.org.uk](mailto:admin@dorchester-abbey.org.uk)  
Contact details for Church Wardens and other Abbey information are on the notice board in the Abbey.

### ABBAY WEBSITE

[www.dorchester-abbey.org.uk](http://www.dorchester-abbey.org.uk)

### VILLAGE WEBSITE

[www.dorchesteronthames.co.uk](http://www.dorchesteronthames.co.uk)

### ROMAN CATHOLIC PRIEST

The Presbytery  
*Fr. John Osman*  
Bridge End  
**01865 340417**  
[www.sfbirinus.co.uk](http://www.sfbirinus.co.uk)

Dorchester Abbey Museum E-mail  
[museum@dorchester-abbey.org.uk](mailto:museum@dorchester-abbey.org.uk)



## REFUSE COLLECTIONS

Fri 2 Oct **Black**  
Fri 9 Oct **Green**  
Fri 16 Oct **Black**  
Fri 23 Oct **Green**  
Fri 30 Oct **Black**

### Weekdays from 7.00am

Weekly: food waste (in bio-degradable starch-based bag or wrapped in newspaper, in green caddy).

The recycling centre at Oakley Wood (off the A4130) is open.8.00am – 5.00pm seven days a week.

## Index of advertisers

	Page
Acupuncture Barn	22
AKT Planning	24
Arbocare	26
Bell Motors	24
Ben Smith Carpentry	24
Brannfords Garden Makers	24
Bristow	19
Bryan's Locks	13
Culham Garden Services	7
Dorchester Fireplaces	6
Dorchester Window cleaning	23
Four Winds	26
Full Circle	10
Graceful Gardens	23
Horted	6
Howard Chadwick Funerals	22
In House	6
JEM chimney sweep	22
Jenks	30
John L Fisher	22
Larkmead Vets	7
LB Plumbing	26
Martin Drew Logs	22
Massage Matters	4
Millstream Pilates	25
Purely Plants	24
Q Self storage	21
Remloc Plumbers	22
Roy Passey Builders	22
St Mary's Dental	29
Steve Wilkinson	13
T W Hayden	22
The Head Gardener's Wife	5
The Landscape Group Oxford	9
The Sewing Lady	24
Thimbles and Threads	26
White Hart	30



## Still safe to serenade!



Since the government's announcement on Wednesday 9 September we've been consulting carefully about our upcoming performances at Dorchester Abbey. We're overjoyed to announce that **our performances can safely go ahead under government guidance**. So join us over the next few months for some truly uplifting evenings of music!

On **26 September** we'll be bringing you two exhilarating performances of old favourites & hidden gems, including Dvořák's exquisite *Serenade for Strings* and Coleridge-Taylor's reflective *Summer is Gone*. Looking further ahead, **17 October** will see an intimate evening of chamber delights featuring Brahms' glorious A Major violin sonata, while on **28 November** we'll be joined by soprano Iлона Домнич for a heart-warming concert of Fauré, Wagner & Glazunov. We'll wrap up the series on **12 December** with Tchaikovsky's swooning *Serenade for Strings* alongside sparkling works by Hurd & Karłowicz.

We'll perform each concert twice—our first performance will run from **6.00–7.00pm**, and our second from **7.45–8.45pm**. Why the long interval? We've allocated extra time to escort you in and out of the venue in an orderly, distanced fashion & to replace your chairs with new ones.

**That's not the only way we'll be keeping you safe.** We'll all be socially distanced at all times, and require audience-members and musicians to wear a mask for the duration of the performances. You'll be inundated with hand sanitiser at the Abbey's entrances and exits, and we'll be operating a one-way system to ensure audiences don't mix.

To keep you safe we can only accept advance bookings—so why not **book now**

