

Dorchester News

Free to every home in the parish

December 2017/January 2018





In this issue

Abbey Christmas Cards	7
Abbey Christmas Services	3
Abbey Museum	9
An invitation to Bath	4
Angelos	3, 10
Berinsfield Health Centre	27
Berinsfield Library	28
Bonfire Night	16
Changes to bus services	6
Christmas Tree workshop	4
Crossword Solution	11
Dorchester Diary December	33
Dorchester Diary January	34
Dorchester's Heavenly Host	
Angels	5
Earth Trust	15
Focus on Boost!	18
FODLWOS update	20
Football results	6
Friends of Abbey Lecture	22
From your County Councillor	23
Harmony InSpire	13
Heavenly Host knitters	4
Hempcroft Allotment News	13
HFT Coming of Christmas	13
Historical Society	9
Host UK	14
Hurst Water Meadow Trust	15
Lunch Club	5
Morning Service 4 Feb	3
Morning Service 7 Jan	3
Neighbourhood Development	
Plan	25
New turf at Abbey	7
OSJ Concerts	36
Oxfordshire Expressway	29
PACT Carol Concert	28
Parish Council	25
Posada	4
Posada Party	3
Pre-School News	6
Remembrance Day	7
Save the Fleur de Lys	5
SODC Report	26
St Birinus School News	6
Talking Point	3
Team Service	3
The Season of Goodwill	11
Useful information	35
Village Carol singing	4
Wallingford Archaeological Soc	31
Wallingford Corn Exchange	32
Wallingford Museum	31
Wallingford U3A	31

Dorchester News
December 2017/January 2018
A DoT view

The last Dorchester News of the year is also the first one of the new year. So this is a time to look back, but also a time to look forward. And there is a lot of both to do.

Unfortunately the year 2017 ends with a considerable amount of uncertainty for 2018 hanging over the village.

- It is possible that by the time you read this the Friends of the Fleur de Lys will have raised sufficient money to make a bid for the Fleur de Lys and that that bid will have been accepted. However, even if the former is achieved, which I feel is quite possible, I suspect that whether that will be accepted will not be resolved for a while.
- The application by FODLWOS to declare village greens of some of the Bishops Court Farm land, is now estimated to take two to three years to be completed, and there is a 12 to 15 year backlog on applications to make footpaths rights of way, so there will be no speedy resolution on either of these.
- The proposed Oxford-Cambridge Expressway hangs over our heads but there will be a decision by Highways England next summer; so at least by this time next year we shall know where we stand on that one.

There is more to read on all of these topics in this issue.

But let's be cheerful. The bus service into Oxford has been improved (the power of John Lewis) and Christmas is just around the corner; there are lots of concerts and Christmas events coming up, and it is, as James Pratt so eloquently puts it on page 11, The Season of Goodwill. I couldn't have put it better myself.

Ian Brace

Cover: Cottage in the snow © Frank Blackwell



Deadline for
February
Dorchester
News
12 January

email: dorchesternews@dorchesteronthames.co.uk

Editorial Team

Ian Brace, Steph Cook

Distribution Co-ordinator

Maurice Day

Copy Deadlines for
Dorchester News

February 2018 12 Jan

March 2018 9 Feb

April 2018 9 Mar

Advert Deadlines for
Dorchester News

One week before copy deadline. Items in electronic form may be sent via e-mail attachment to e-mail address at foot of page.

For newsletter for other churches in the Team send to admin@dorchester-abbey.org.uk by the 9th of the preceding month.

Advertising in Dorchester News

There are ten issues per year with double issues in July/August and in Dec/Jan. For an eighth of a page the cost is £11.75 mono, £12.75 colour; for a quarter page £23.50 mono, £25.50 colour; for a half page £35.25 mono, £38.50 colour and full page £47.00 mono, £51.00 colour.

All charges are put towards the cost of the paper, printing and postage of copies being sent outside the village.

To incorporate a logo or artwork, please supply a copy, preferably via e-mail: to address at foot of page or contact the editor.

One-time adverts, please send a cheque, payable to 'Dorchester Abbey PCC', to Nick Forman, Willoughby House, 73 High Street, Dorchester-on-Thames, OX10 7HN.

Printed by Higgs of Henley.



Talking Point

Canon Sue Booy

Like many people I love doing Sudoku – and when I’m on holiday I enjoy the logic puzzles which have grids that allow you to work out the links between particular elements of a ‘story’. The first records of what we call ‘The Christmas Story’ require a bit of sorting and logic to help us understand them. Mostly we simply just accept ‘The Christmas Story’ without wondering where it came from, what was originally written or why its authors wrote the way they did. When we don’t apply logical thinking to the way it came about we tend to dismiss it as a legend rather than a story which reveals truth.

‘The Christmas Story’, like other accounts of Jesus, is written down in four places (the Four Gospels whose name means ‘Good News’). Each of the four writers has their own distinctive style, their own sources and each believed themselves to

be writing history. The writer Luke seems to have known a member of Jesus’ maternal family – we deduce this because the parts of the story about the angel appearing to Mary and her visit to her cousin Elizabeth only appear in this account. Matthew, by contrast seems to be a writer with a politico-religious intention – he wants to show that Jesus is firmly linked into Jewish history and he seems to have some political – even international – knowledge; it is in Matthew’s version of the Good News that we hear about the visiting foreign dignitaries – the three Magi. The writer Mark doesn’t begin the Good News of Jesus until he’s grown up whereas the final writer John takes a more cosmic and mystical approach....

In the beginning was the Word, and the Word was with God, and the Word was God. He was in the beginning with God. All things were made through Him, and without Him nothing was made that was made. In Him was life, and the life was

the light of men. And the light shines in the darkness, and the darkness did not comprehend it.

His words echo across the centuries every Christmas making it clear that the ‘truth’ of Christmas is a difficult matter to comprehend. It is John’s words we remember ... John’s words that have the first place in the celebration of Christmas whether it is as the Gospel reading at the midnight service or the final reading at the Carol service. John’s words that invite us to wonder about the very beginning, to wonder what Jesus was all about, to wonder what it might be like if there was truly a light to illuminate all the dark corners of our understanding.

In the beginning was the Word.

I hope that your Christmas will be truly blessed – and that the mystery of the Word that breathed the beginning of all things will speak joy and peace to your heart as you celebrate.

Christmas services in the Abbey

There’s a ‘box of delights’ to open with our services this Christmas all of them surrounded by the wonderful images of Angels from famous works of Art which have been with us during the season of preparation for Christmas. Come to listen to our Choir and sing **Carols by Candlelight** on **Sunday 17**, join in the excitement of the **Crib service** 4.30pm on Christmas Eve or the awe of **Midnight Mass** which begins at 11.30pm. Everyone is welcome to celebrate on Christmas morning quietly at 8am or with the whole family at 10.30am. As usual children are invited to bring a favourite present to show Reverend Sue – and you are welcome to come and go as suits your family needs - late arrivals and early departures are fine. We would love to see you to say Happy Christmas.

The Posada Party

Every year the Posada – the Holy Family Mary and Joseph - travel around our community (see details elsewhere) in preparation for Christmas. At the Posada Party we’ll welcome them to the Abbey before they begin their final journey along the High Street preparing for the birth of the Baby at Christmas. More on page 4.

Sun 7 Jan 10.30am Morning Service

Our speakers will be Val Jourdan and Alison Driscoll from ABCD (Action around Bethlehem Children with Disability), who have a long connection with the Abbey. They will tell us about the charity, and explore the true meaning of ‘The 12 days of Christmas’.

Service for the Team 31 December

On the Sunday after Christmas there will be a service of Holy Communion in Dorchester Abbey in the St Birinus Chapel at 8.00am. At 10.30am there will be a service of Holy Communion for the whole Dorchester Team at St Laurence Church, Warborough conducted by the Reverend Doctor Marcus Braybrooke.

Sat 6 Jan – ANGELOS

An event to celebrate the end of the *Realms of Glory* exhibition and to remember Rebecca Slingsby, church warden, teacher, friend.

Enjoy the atmosphere of the Abbey, enjoy good conversation, a drink and take a last chance to savour the Angels exhibition. The Abbey will be fully candlelit for this evening, and the time will be interspersed with performances from the Dorchester Abbey Choir, Holly Papaphilippopoulos (Slingsby) and Brian Catling, Meditations on Rebecca’s Nativity scene led by Canon Sue Booy and others and an interactive Art installation in which everyone is invited to participate...

More on page 10

Sun 4 Feb 10.30am Morning Service

Mrs Penny Faust from the Holocaust Memorial Day Trust will be coming to speak. The title of her talk will be Holocaust Memorial Day: from 2001 to our post Brexit era.

Posada

Posada is an old Mexican tradition where young people dressed as Mary and Joseph travelled from house to house asking for a room for the night and telling people about the imminent arrival of Jesus in the weeks leading up to Christmas.



Modern day Posada uses nativity figures of Mary and Joseph who travel from place to place. This gives each 'host' the chance to create their own celebration reaching out to others with the real message of Christmas, making room for Jesus in their lives.

Look out for Dorchester's Mary and Joseph through advent, travelling to school and pre-school, and from window to window towards the Abbey where they will finally arrive at the 4.30pm Crib Service on Christmas Eve, enjoying a Posada Party at our 10.30am family service on **Sunday 17 December** along the way

Steph Forman

Calling all Heavenly Host Angels knitters/crafters!

Please make sure that your Angels are in the Abbey by 10.15 am on **Sunday 3 December** as they will be dedicated at the 10.30 service that morning. All are most welcome to attend.

Contact Denise Line **07596 524335** with any questions

An invitation to Bath

It is now over a year since I moved from Leominster to Bath - so, I am much nearer to Dorchester on Thames. For health reasons I am not able to drive. However quite a number of friends have travelled to Bath to see where I live in the Crest Nicholson Riverside development by the River Avon, to have lunch in my apartment and then go with me on a walk up to the Botanical Gardens and then along the Victoria Park to the Royal Crescent, the Circus and down to Bath Abbey, returning by bus or walking along the river path to my apartment. It only takes 40 minutes, walking slowly so as to be able to stop and look at the landscape, parks and buildings, to do this walk into the centre of Bath.

Already visitors, including friends from Leominster, have enjoyed such an outing to Bath. I would be delighted if any Dorchester friends (and newcomers to the village since I retired in 2004) would accept my invitation.

With Christmas almost upon us - let's look to after the middle of January before planning any such visits. Meanwhile I wish you all A VERY HAPPY AND JOYOUS CHRISTMAS! I recently was able to see the REALMS OF GLORY celebration of Angels exhibition in the Abbey, which will be a wonderful way of enriching Advent and the Christmas season.

Here are my details:-

16 Alexandra House, Midland Road, Bath, BA2 3GD.

Tel **01225 336839**.

Email - johncrowemessages@gmail.com

**With love and prayers,
John Crowe.**

Village Carol Singing Wednesday 20 December 6.00pm

Come and have great fun singing carols around the village with the Abbey choir to raise money for ABCD - Action Around Bethlehem Children with Disability.



We will meet outside The Fleur at 6.00pm and finish with mulled wine and mince pies

All ages and talents welcome. Even if you can't sing you can help by collecting money! Bring a torch and dress warmly. Please email/phone if you intend to come—occasionally we call it off if the weather is dreadful!

Steph Forman

steph@forman.org.uk

01865 340434



Christmas Tree workshop Saturday 2 December

How do we decorate the top of the Christmas tree in the Abbey when it is soooo tall?

Why not come and see (and give us a hand) on **Saturday 2 December**. We welcome a bit of strength at about 9.30am to get the tree - and its pot - into the Abbey and get ready for the main task of decorating which starts about 10am. There will be activities for children and families, refreshments and all the excitement of decorating and putting up the tree. We'd love to see you there!



Lunch Club

The Lunch Club lunches will be held on the second and fourth Wednesdays of the month from January to March inclusive. Therefore, the dates will be **January 10 and 24, February 14 and 28, March 14 and 28**. The lunch is held in the back room of the Village Hall, please come at 12.30pm to start the meal at 12.45pm.

We welcome new retired people living in the village to join the Lunch Club; it is a lovely way to quickly get to know people living in the village in a friendly and welcome atmosphere. At present I am not quite sure what the charge will be for the lunch, but it will not be more than £5 maximum.

I already have a wonderful team of volunteers, but I would be very pleased to have more volunteers to help in any of the following ways:

- **Car drivers** to help bring a disabled person to the village hall and take them home again (while enjoying the lunch as well),
- **Cooks** to join our existing teams willing to make soup, casseroles, vegetable dishes and puddings occasionally,
- **Washing up volunteers** to join a team so the present helpers do not have to do it every session.
- **General helper** to help lay up the room before the lunch.

If you think you could help, or would like to join the Lunch Club for lunch please contact me on **01865 341066** or email susan@jupp13dot.force9.co.uk.

Susan Jupp

Discover Dorchester's Heavenly Host Angels

From **4 December** a Heavenly Host of angels will descend on Dorchester. These lovely small crafted angels will be found all over the village – on landmarks, trees, in pubs or even appearing on your doorstep

See how many Dorchester angels you can find, photograph them and share your discoveries on Facebook – the page is **Heavenly Host Dorchester on Thames**.

You can even take one in for Christmas and put it onto your mantelpiece or Christmas tree to remind you of the role angels play in Christmas or perhaps of a loved one you have lost but wish was with you for the festive season.

This project is linked to our Realms of Glory Angels exhibition in the Abbey. Contact Denise Line **07596 524335** with any questions

Save the Fleur de Lys

£200,000 has been pledged by 115 people to become shareholders of a community owned Fleur de Lys, but we need much more. This was the message to the public meeting held on 9 November to consider progress towards a community bid to buy the Fleur. It is likely to be put up for sale at the end of November.

The aim is to secure the long-term future of the Fleur as a flourishing pub for the benefit of the community, by vesting ownership in a society controlled by the community and running the pub profitably.

At the meeting Liaan van Zyl, tenant at the George, laid out his vision for the Fleur if it became a community pub. As a genuine pub its business was complementary with the George and White Hart Hotels rather than in competition with them. He saw a rosy future if he was offered the tenancy in tandem with his tenancy of the George, saving costs and able to broaden what the Fleur offered its customers by sharing staff and kitchen resources.

The proposal is that:

- the pub should be bought, financed by stable capital, able to withstand short term fluctuations in the business - ie mainly share capital;
- let the pub to an experienced tenant, on terms that enable him to profit from success;
- put the community in control, so that the tenancy agreement reflects community desires, and the tenant benefits from a reservoir of local customer support.

Having taken professional advice on the Fleur's value as a pub business and its physical condition, the working group set a fundraising target of £600,000. Taking account of the need to incentivize the tenant by not charging too much rent, the working group concluded that it would be feasible to borrow £200,000 at market interest rates. To borrow more would run too much risk that the cost of repaying the loans and paying interest on the capital would exceed rents received from the tenant of the pub.

So we need £200,000 more as pledges.

The 80 people present enthusiastically endorsed the proposal, and discussion centred on how to raise additional funds - how to achieve more publicity, extending to surrounding villages, using local TV and press, and knocking on doors in the village. The working group needs more

communications expertise and more feet on the ground, and many people in the hall were prepared to help.

Alternative ways of raising stable capital were discussed, notably the idea of low or interest free loans subscribed by shareholders on terms which enjoyed an income tax rebate, as an alternative to bank



loans. This would provide a way for supporters willing to commit more money than they wished to invest in permanent shares to know when they would get their additional money back. These ideas will be further explored by the working party. Here again, more financial, legal and accounting expertise than the current working group has is badly needed.

Alternative ways of structuring the legal entity which would own the pub were also explored. The proposal for a community benefit society legal form has the disadvantage for aspiring capitalists that all profits must be ploughed back into the business or other local charities, so shareholders cannot expect to get back more than they put in and modest interest. Using a conventional company would remove this disadvantage, but in giving voting rights to shareholders on the basis of how many shares they held would reduce the democratic benefit of community control which is a feature of community benefit societies.

The messages were clear. From participants, continue the good work; we want this to succeed. From the working group, we need more foot soldiers to get the message across that we need more capital, and more expertise to nail down the legal, financial and accounting issues.

Over to you; please become an active volunteer!! Contact info@friendsofthefleur.com



Pre School News

The Pre-School had a successful fundraising event at the end of October in the form of a Halloween Party. The children had a brilliant time, and all looked amazing in their costumes. The party raised a grand total of £237.48 for Pre-School. Thank you to everyone who came!

In this second half of the Autumn term the children are looking at the theme of 'Christmas is coming'. They will be baking some Christmas treats and visiting the Primary School to watch their nativity play. The Pre-School children will also be performing in their own nativity concert for parents at the end of term. The shape of the term is the star, the colours of the term are black and white, and they are continuing with a new letter each week and looking at numbers 1 to 10.

We wish everyone a Merry Christmas and Happy New Year from all of us at Dorchester Pre-School.

Louisa Margison
Pre School Secretary



St Birinus Primary School News

As I write this, Owl Class (Year 5/6) and I have just returned from our residential to the Woodlands Centre in Glasbury. It was a wonderful experience, where I was able to see the children grow in confidence and independence. They worked and played extremely well with the children from St Blaise in their activity groups, during the meal times and evening activities – I am so proud of them. We all tried caving, canoeing, the high ropes course, climbed up a mountain on a long walk, this with the evening activities certainly filled our days. They even kept their rooms clean – luckily my room was never checked! A big thank you to Mrs Sadler and Mrs Gauden (Parent Governors) for stepping in to help me with the supervision during the week – it was greatly appreciated.

As you read this, we would have started to think about Christmas with our Nativity play, Christmas meal etc. As usual we have our Christmas Service at 9:15am on 15 December 2017 in the Abbey – this is open to anyone that would like to join us and it will be great to see you as we sing our carols and read the Christmas story together.

Russell Leigh
Headteacher
Dorchester St Birinus CE Primary School

Changes to bus services serving Dorchester

138 (The Midsomer Route)

The new 138 service from Dorchester to Wallingford has a revised timetable. From **13 November** the service runs on **Tuesdays and Thursdays only**, but there are more journeys.

Bus leaves Dorchester at: 10.26 11.11 13.05 15.25

Bus leaves Wallingford at: 10.15 11.00 12.50 15.10

This is now called The Midsomer Route!

X38/X39/X40 (The River Rapids)

Thames Travel has made significant improvements to the services that run along the by-pass between Oxford, Wallingford, Reading and Henley. There are now three services an hour to Oxford or to Wallingford and beyond. And the X39/X40 service from Oxford to Reading is now joined by the X38 from Oxford to Henley.

And this is now called now called The River Rapids services!

The Dorchester Flyer

We clearly started a trend when we named our parish bus The Dorchester Flyer!

This continues to run on **Fridays**.

Bus leaves Dorchester at: 10.15 12.00

Bus leaves Wallingford at 11.40 13.00

It's a great way to visit Wallingford market without having to park, which is a nightmare on Fridays!

Tickets need to be bought in advance from Lily's



Football Results Oxford City League First Division



28/10/2017	South Park Rangers First	3	3	Dorchester First
04/11/2017	Dorchester First	6	2	Great Milton Reserves
11/11/2017	East Oxford Firsts	1	4	Dorchester First

Mindfulness Classes

Practising mindfulness is a scientifically proven way of bringing a sense of peace to your life; improving your health, bringing a sense of empowerment and increased happiness. It also lessens any feelings of anxiety stress or depression.

I am hoping to run the mindfulness based stress reduction (MBSR) course in **Dorchester Village Hall** from **January 2018**. The classes will be held on 8 consecutive Tuesday evenings, plus an all-day on a Saturday or Sunday (tbc) in late February.

The course will cost £220 per person or £180 if unwaged.

For more information please see my website:

mindfulnessouthoxfordshire.com

or email me: sophiastewartliberty@gmail.com with questions or to register interest

New turf at the Abbey

After the success of converting the Rose Walk with turf, it was decided that the area of overgrown shrubs and ground elder opposite the porch would also benefit from being turfed.

An important gravestone has been revealed, that of Reverend MacFarlane, the mid-19th century rector of Dorchester Abbey. He was a hugely generous benefactor, responsible for the refurbishment of the Abbey, the Guesthouse, building the present Rectory and the Village Hall (as a school) as well as other local buildings. We hope to celebrate his legacy in the new year, 2017 having been the bi-centenary of his birth.

We hope all villagers and the many visitors to the Abbey will enjoy the wonderful sward of grass and 'opened up' vistas that have been created, and having a large free space to gather after events

**Kathy Glass
Gerry Wells**



Remembrance Day 2017

Councillor Chris Hill places a wreath at the village War Memorial.



Victorian wall painting of the Annunciation from the Lady Chapel

9 x 20cm

© Nick Forman

The 2017 Dorchester Abbey Christmas Cards

*Sold in aid of
Dorchester Abbey*

Nativity scene from the East End window
17.6 x 12.5cm



© Frank Blackwell

These cards are sold with envelopes in packs of 10 for £4.50 and are colour printed on glossy quality card with 'Happy Christmas' inside and 'Sold in aid of Dorchester Abbey' on the back.

Cards can be bought from the back of the Abbey and the Museum. Previous years' cards are also available

Have you seen the signs?

According to rightmove , In House sell more Dorchester properties than any other agent!

Owned and run by a Dorchester resident, In House are pleased to offer discounted selling or letting rates to fellow residents!

Call **01491 839999** or visit our website to book your free valuation

www.inhouseestateagents.co.uk



Anderson | Orr
Architects



Contact us for a free and informal discussion about your project.

01865 873936 info@andersonorr.com

www.andersonorr.com

Ben Smith

Carpentry & Building

07803533163 01865 361171 07884103142

Enquiries@bscarpentry.co.uk

Carpentry, Joinery & Building Contractors

Suppliers & Installers of
Windows, Doors & Conservatories
Purpose Made Joinery Products
Kitchen Furniture

We undertake all building works,
Including the design through to
local authority approval if
required.



References Available Upon Request



VAT REG NO: 212 6329 30



Dorchester on Thames Historical Society

24 January 2018,
7.30pm Village Hall
Talk to be followed by a brief AGM
Members free, Visitors welcome (£3.00)

Professor Gregory Stores on: '*Commemoration of the Deceased. Historical Aspects from Local Churches including Dorchester Abbey*'

Commemorating the deceased in different ways and for various reasons seems to be a long-established practice. However, the archaeological evidence for earliest times is difficult to decipher. By contrast, in the medieval period commemorative practices closely reflected the theology of the Catholic Church.

Following an outline of early burial and possible commemorative aspects, this illustrated lecture will focus on the Late Medieval Period especially the pre-Reformation Catholic beliefs and practices, which changed significantly as a result of the English Reformation.

The contrast between pre- and post-Reformation commemoration of the deceased will be discussed with reference to tombs and monuments in Dorchester Abbey and other local churches.



Professor Stores is a physician and academic whose hobbies include life in the Middle Ages about which he lectures widely to Local History groups and branches of the University of the Third Age (U3A). In conjunction with colleagues in the village, he also conducts tours of Dorchester Abbey for visiting historical societies.



Dorchester Abbey Museum News

After a busy season from April to the end of September this year, we're already looking forward to the 2018 season, when we hope you'll often be visiting the Museum, as a volunteer or visitor, or hopefully both.

This year we've welcomed about 4,500 visitors, as well as around 480 school children and teachers. We decided to close to the public on Mondays and Tuesdays to focus on school groups. This has given us the opportunity to develop the education side of the Museum's work, and offer Roman and Anglo-Saxon experience days, in cooperation with the Abbey Education Officer, Margaret Craig. The museum is also working closely with our local school.

We've received a lot of very positive feedback from the schools – they very much appreciate the opportunity for the children to enjoy a full day of activities in the Museum and the Abbey, in such an exceptional historical site. The children also love having a picnic and the chance to run around freely in the safe environment of the Cloister Gardens. The Oratory School commented that their recent visit to us was 'the best education outing of the year'!

The new Gift Shop has also been successful, with takings higher per week than last year, and is helping to build a secure financial position for the future. It's been a real challenge this year for us all to get used to the new cash till and credit card machine - a more professional approach to running the shop. We think being able to take credit card payments has made a big difference in sales. Best credit card sale of the year: £88 spent by one customer!

There are also changes behind the scenes as we work to build a higher profile for the Museum. As mentioned in the November issue of *Dorchester News*, we are focussing on engaging with the local community before reaching out more widely. Looking to the future, we are trying to be more informative, more accessible, and more inclusive.

We hope that you'll think about joining us to help achieve these goals - they cannot be reached without our volunteers, and you. We really need wider involvement from the Dorchester community to help the museum to thrive. Any time, any day, any small contribution you can give will make a big difference for us. As a well-known food retailer says: 'Every little helps!'

Please let us know if you might be able to give some time during the 2018 season, or if you would just like a look round the Museum and a chat about what's involved in being a volunteer. Anne-Marie, the curator, and her fellow volunteers will be pleased to show you round. Volunteering's not a huge time commitment, usually just six to eight sessions over the six month opening season, or there are smaller-scale and one-off tasks to help with too.

Please contact

Anne-Marie: joffrin.annemarie@gmail.com tel 01235 539858

or

Yvonne: y.m.lawden@gmail.com tel 01865 340465

CP GROUNDWORKS

Colin Passey

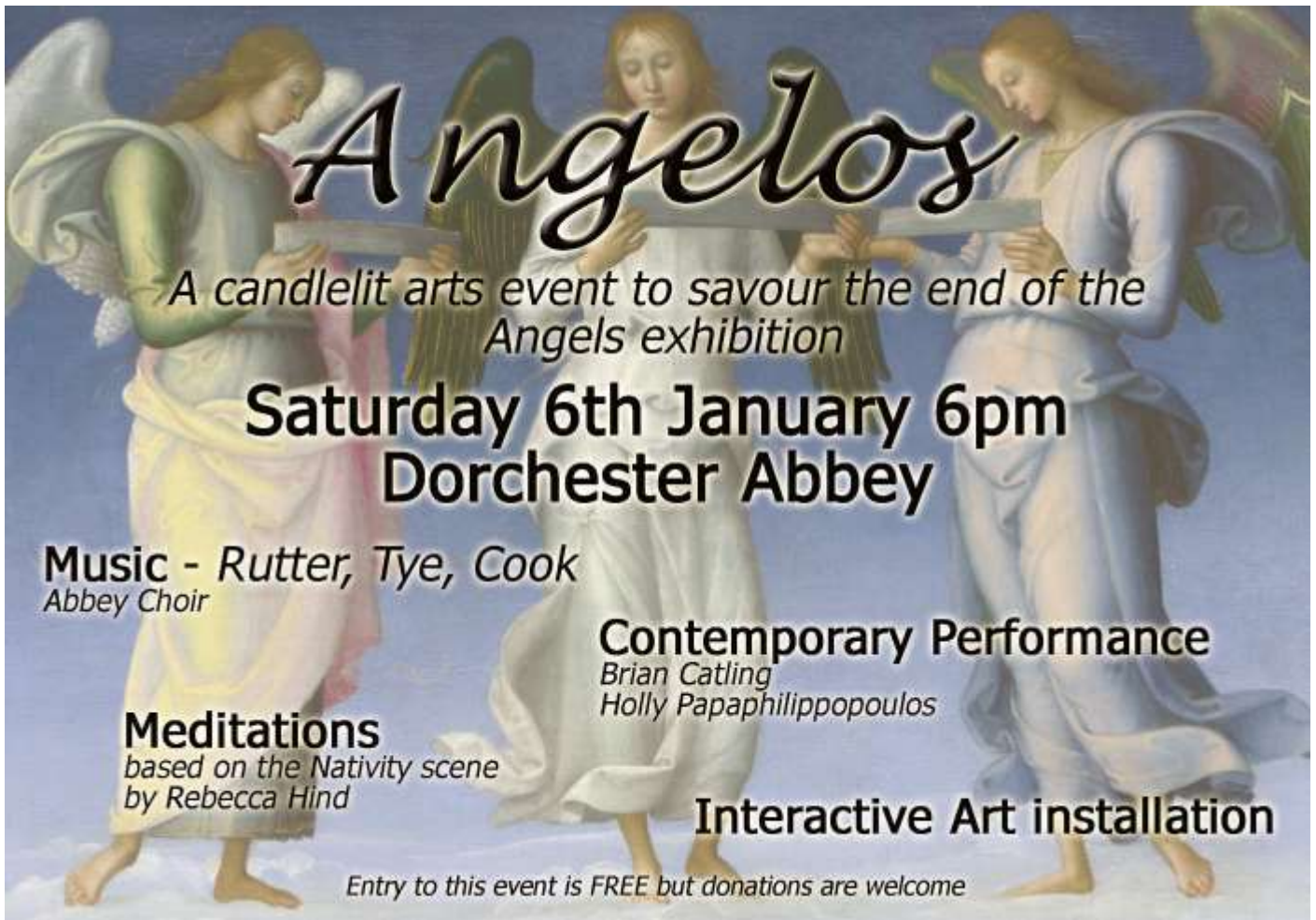
Mini Digger/Skip Loader with Operator

Footings, Oversites,
Drainage, Patios,
Driveways,
Site Clearance, etc.



Mob: 07853612505
Tel: 01491 598856
colin.passey@icloud.com

"No job to big or too small"



Angelos

A candlelit arts event to savour the end of the Angels exhibition

Saturday 6th January 6pm
Dorchester Abbey

Music - Rutter, Tye, Cook
 Abbey Choir

Contemporary Performance
 Brian Catling
 Holly Papaphilippopoulos

Meditations
 based on the Nativity scene
 by Rebecca Hind

Interactive Art installation

Entry to this event is FREE but donations are welcome




L B Plumbing

Toilets, taps, immersions, showers, leaks and more,
no job too small

Fully insured, free estimates,
 no call out charge

**Call Lee 01491 834484 /
 07981642688**



ROY PASSEY BUILDERS

Interior and Exterior Builders and Decorators

Ashcroft, High Street, Benson, Wallingford, Oxon. OX10 6RP
 Tel: 01491 838797 • Mob: 07860 890925
 Email: roypassey@btconnect.com
 www.roypasseybuilders.co.uk



Graceful Gardens DESIGN

Gardening Service
 by RHS qualified female gardener

Garden design / Plans / Landscaping / Planting
 Demonstrations / Consultations / Pruning / beds and borders...

Call 07814 691040
 email: sundaycarrigan@gmail.com
 www.gracefulgardens.vpweb.co.uk

Quotations by appointment References available
 Wallingford and surrounding villages covered



Kes Furniture Restorers

Mobile: 07879 522 511
 Workshop: 01865 340173

River Mead, 12 Oxford Road,
 Dorchester on Thames, Oxford OX10 7LX

www.kesfurniture.co.uk

Solution to The Dorchester News Crossword

Number 1

Compiled by Slider

1	B	A	2	D	I	3	N	A	4	G	E		5	C	6	O	O	7	P
A		O		A		E									P		A		
8	S	E	D	A	T	I	O	N		9	W	E	A	R					
H		O		I		R			10	T		R		T					
				11	C	O	N	G	R	E	G	A	T	E					
12	P		13	S		N		E		A		T		R					
14	A	S	T	R	A	L			15	A	P	P	E	A	R				
S		R		L			16	T		A		D		E					
17	S	M	A	L	L	H	O	U	R	S									
O		I		Y		B		T			18	L		19	W				
20	V	E	G	A			21	M	A	R	I	T	I	M	E				
E		H				G		E		E		E		N					
22	R	A	T	E			23	L	O	P	S	I	D	E	D				

Here is the solution to the Dorchester News Crossword printed last month.

Crossword Number 2 will be printed in the next issue, February 2018, and will be a prize crossword—so look out for that!

The Season of Goodwill

By James Pratt

With the falling leaves of autumn,
Comes the season of good will
A time of joyous celebration
Where kindness fits the bill.

There seems to be a different approach,
To all as Christmas draws near.
A happy, thoughtful friendliness,
Which says 'Our Lord is here'.

To think in a stable long ago,
The miracle came to be.
Our saviour Jesus did appear,
To save Humanity.

Through his life He showed us all,
The way things should be done.
And we are wise to follow him,
He is the chosen one.

Enjoy this celebration,
Draw your friends and loved ones near.
For soon it will be Christmas time,
It comes but once a year.

And if I had a passing thought,
That I could leave with you,
Treat every day like Christmas day,
And God will smile on you.

Dorchester Window Cleaning Service
We provide a friendly reliable service every 5-6 weeks.
Free quote—no obligation. Est 1990

Contact Craig Taylor
Tel: 01235 512881. Mob: 07778 661548
www.elitewindowcleaningservice.com

A bill can be left for postal payment if you are not home.
Online payment also welcome.
Other services include: Conservatory roof cleaning; Fascia cleaning; Gutters unblocked & cleaned out.

FOR A BEAUTIFUL GARDEN
Choose from our wide range of quality garden services: design and construction, plants and maintenance. We tailor-make our service for you.

For a free, no-obligation visit and written estimate from RHS qualified staff, call 01844 279430,
or email info@brannfordsgardens.co.uk
Full details at www.brannfordsgardens.co.uk



ALTOM TREE CARE LTD



Tree Felling
Height Reductions
Stump Grinding
Landscaping • Fencing
Grass/Hedge Cutting
Patios • Turfing
Maintenance Contracts
SEASONED LOGS FOR SALE

For a reliable, professional service
Mob: 07958 759747
01844 339 833
FULLY INSURED & FREE QUOTATIONS
Email: altomtree@gmail.com
www.altomtrecare.co.uk

BODY CONTROL PILATES®

BCP level 3 certified teacher specialising in back & joint care, sports rehab, pre & post natal and Parkinsons Disease

Beginners and Mixed Ability Classes in Benson and Dorchester On Thames
121 sessions available for personalised programmes

To book contact Claire on 07801 298 978
www.millstreampilates.co.uk
claire@millstreampilates.co.uk

Here to help you find and book the perfect holiday....



Arranging a holiday can be very frustrating and challenging. But with Full Circle Travel, it doesn't need to be.

- We are a local, independent travel agent with mature, professional and well-travelled consultants.
- You do not pay more for our service but get a lot more than booking direct.
- You can book with your favourite tour operator but book locally.
- We are ABTA and AITO members and ensure your money is safe in an uncertain world.
- We listen, we care and are passionate about finding you the perfect holiday.
- Search 'Full Circle Travel' at www.trustpilot.co.uk to read what our clients say about us.

A selection of operators you can book with us at no extra cost to booking directly:

Club Med - Cox and Kings - Abercrombie and Kent - Mark Warner - Audley Travel - Explore - The Adventure Travel Company
Royal Caribbean - Carrier - Western & Oriental - If Only - Beachcomber - Exodus - Kuoni - Viking River Cruises - Seabourn
Riveria Travel - Silversea - Regent Seven Seas - Classic Collection - Prestige Holidays plus many more - please just ask.

Full Circle Travel, 59 St Marys Street, Wallingford, OX10 0EL

www.fullcircletravel.co.uk

T: 01491 833227

E: holiday@fullcircletravel.com



Beauty Essentials

Indulge yourself
in a full range of
Beauty Treatments
& Therapies

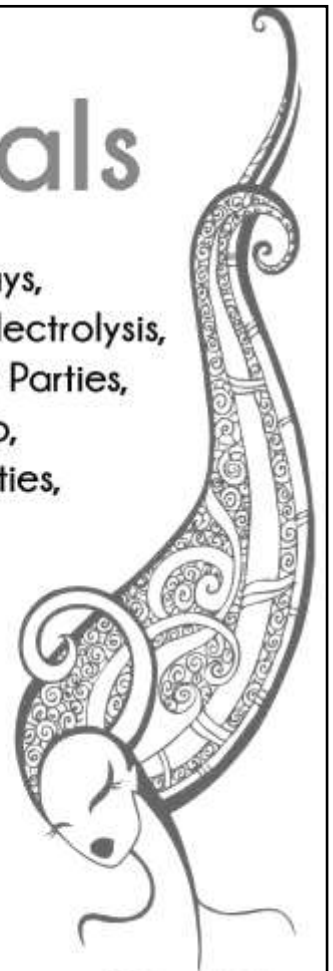
Manicures & Pedicures, Gel Overlays,
Facials & Eyelash Tints, Waxing & Electrolysis,
Massage & Spray Tanning, Pamper Parties,
Bridal & Special Occasion Makeup,
Children's Glitz & Glam Sparkle Parties,

GIFT VOUCHERS & REGULAR SPECIAL OFFERS
VISIT OUR WEBSITE FOR DETAILS

Beauty Essentials, Rear of 81 High Street,
Wallingford, OX10 0BX

www.beautyessentialsoxon.co.uk

07583 371198



The Coming of Christmas at Dorchester Abbey with Hft

Learning disability charity, Hft, invites you to join them on **7 December** for this much-loved festive event. As usual, the beautiful Abbey will be bathed in the glow of over 1,000 tea-lights, as we enjoy music performed by the acclaimed Choir of New College Oxford, conducted by Paul Brough, and some wonderful readings from renowned actors Juliet Stevenson CBE and Michael Pennington*.

Juliet Stevenson is one of the most respected actors of her generation, well-known for her work on both stage and screen. Most recently, she has starred in the feature film *Let Me Go*, delivered sparkling performances in *Mary Stuart* and as Gertrude in *Hamlet*, both at the Almeida, and played the leading role in *Wings* at the Young Vic; widely acclaimed as a *tour de force*.

Michael Pennington is known for films *Star Wars: Episode VI - Return of the Jedi*, *Fragile* and *The Iron Lady*. He was a triumphant King Lear in New York and before that played Edgar in *The Dance of Death* in London. He is co-founder of The English Shakespeare Company and author of several books, including his recent *Hamlet – A User's Guide*.

Tickets cost just £23 and include a souvenir programme, mulled wine and mince pies, which will be served

in the Abbey after the concert.

All proceeds from the event will go towards supporting Hft's two services in Oxfordshire, helping to provide ongoing support for people with learning disabilities in the local area.

**work commitments permitting.*

When: **Thursday, 7 December 2017**
from 8.00pm to 9.30pm

Where: Dorchester Abbey - High Street, Dorchester, OX10 7HH

Tickets are available here:

<https://comingofchristmas17.eventbrite.co.uk>
or by telephone: **01179 061767** (a £1.25 admin fee applies to all tickets booked by telephone)

Allotment News continued

(Example 4m x 10m = £25.00)

We would like to welcome four new members this month: David, Mike, Steve and Jeanette. Hope you enjoy your plots. The first newsletter for members will be in January after the committee meeting on **4 December**.

I wish all a very Happy Christmas and Prosperous New Year.

Plots available full and half size.
Please call :**01865 340119** or email:
stu@horted.co.uk

Hempcroft Allotment News

As the season changes day length shortens, now is the time to prepare for next season. Plots cleared, dug over and manure added, fruit bush and raspberry cane pruning, weeding and maybe cover with a weed mat to make it weed free for the new season. **Don't forget to get seeds ordered early.**

Crops you could be harvesting in November/December

Kale, celeriac, parsnips (parsnips taste sweeter after a good hard frost though), swede, carrots, red and white cabbages, brussels tops, Jerusalem artichokes, winter spinach, kohlrabi, oriental salads (if they have been given protection), cauliflowers, turnips, swiss chard, celery, leeks, radish, land cress, corn salad and rocket.

Pests and Diseases

Remove yellow leaves from brassicas as this can encourage grey mould. Whitefly can still be a problem on brassicas, so either squash them between your fingers or spray them or use my wife's method of brushing over with a lint roller!!

Pigeons get hungry at this time of year, so make sure you net your brassicas.

An important note: Please do not put eggshells/household waste on your compost heap. It attracts vermin.

We have ordered some professional grade weed mat which is available 4m wide and sold by the linear metre at £2.50 per linear metre.

← Continued

COME AND SING in HARMONY

Do you love to sing, but are not actively involved in music making at the moment?

Do you sing already, but would like to try something new in 2018?

Harmony InSpires, an all-female a Cappella chorus based in Appleton, invites women of all ages to join a FREE evening course in a Cappella harmony singing on 7th, 14th and 21st February 2018

Find out more at: www.harmonyinspires.org or email sing@harmonyinspires.org

HARMONY InSpires
OXFORD

JEM

**CHIMNEY SWEEPING
COMPANY
LTD**

- ★ NO FUSS ★
- ★ NO MESS ★
- ★ NO PROBLEM ★

Oxford
Stadhampton
Deddington
Mobile

01865 772 996
01865 400244
01869 337500
07711 443050

Hosting with HOSTUK 2017-18

Do not neglect to show hospitality to strangers, for thereby some have entertained angels unawares. Hebrews 13:2

How true such advice can be. Hospitality is an equal partnership, the feel-good factor of offering it and the delight in receiving it.

HOST UK is a charity whose mission is to give a welcome to international students in British homes for friendship and cultural exchange. We operate *all* year round including Christmas and New Year when being welcomed into a home is vastly preferable to lonely halls of residence.

Hospitality can be offered for one day (daytime only), three days and two nights at the weekend, or at New Year, or four days and three nights during the Christmas festive period.

The choice is yours. **And remember...your offer can be made at any time of the year.**

If you should like to know more please look at our website:

www.hostuk.org

Or email us on: info@hostuk.org

Or telephone us on: **020 7739 6292**

Dorchester News online

Remember that Dorchester News is available to download from the Abbey website each month (go to the homepage at: www.dorchester-abbey.org.uk and click on Dorchester News) and from the village website (go to www.dorchester-on-thames.co.uk and click on the Dorchester News tab).

Remind your friends and family who have moved away from the village that they can catch up with what's going on in Dorchester.

Fishmonger

The travelling fishmonger comes to Dorchester every Tuesday and will stop between 9.30am and 9.50am (9.40am in winter months when weather bad, but 9.30am in summer months) in High Street near War Memorial.



The George Hotel

DORCHESTER-ON-THAMES

A beautiful 15th century coaching inn set in an idyllic location

We offer a variety of modern British dishes, exotic treats and a senior citizen menu
Join us on Sundays for traditional roasts served with our signature Yorkshire puddings

Ala carte menu available 12-3pm and 6pm-9pm daily

Senior citizen menu available daily from 12pm-3pm at £5.95 per head

Enjoy four fine real ales in our olde worlde pub



Christmas bookings now being taken

To reserve your table please call
01865 340404

www.thegeorgedorchester.co.uk

Hurst Water Meadow Trust News

New Trustee appointment

We are very pleased that Chris Smith has agreed to become a trustee, with effect from 1 November 2017.

Chris moved to Dorchester from London in December 2011. When he retired from an IT career in the motor trade and in financial services he became a regular volunteer in the village: excavating for the Dorchester Archaeological dig, helping to build a database for the museum, and becoming Chairman of Dorchester Tennis Club.

Chris also joined the Hurst volunteer work parties and while working on the meadows became interested in all aspects of the management of the land. Since March 2017 he has been organising the Tuesday volunteer workers on the meadows and has acquired a loyal band of regular volunteers, planning the programme of work with great efficiency to meet our long-term land management goals.

The Trustees look forward to benefiting from the experience and skills that Chris can contribute to the work of the Trust.

Winter grazing

Horses, or more correctly polo ponies, are back on the Hurst for winter grazing. Providing that the meadow is not flooded they will remain as long as there is grass for them. The regime of grazing after the hay cut helps to encourage diversity of plant species and is a feature of traditional meadow management. Often cattle or sheep are used for grazing but they would be more difficult to contain in the Hurst and less compatible with the many canine visitors to the meadows.

The Trustees thank all who have given support to the work of the Trust this year and wish everyone a happy Christmas and New Year.

Gillian Johnson (Hon. Secretary)
on behalf of the Trustees
01865 340925

email: admin@hurst-water-meadow.org.uk



Earth Trust December events

Wreath Making

Friday 1 and Friday 8 December, 1.00pm and 2.00pm each day

Make a beautiful festive wreath for your home or to give as a gift. All materials are provided but feel free to bring along any additional foliage or decorations you would like include. If children would like to take part, please book on to Wreath Making for Families at 3.45pm. Price includes a hot drink and a mince pie! £20 per wreath; booking essential: book online (incurs a fee) or call **01865 407792** during office hours.

Wreath Making for Families

Friday 1 and Friday 8 December, 3.45pm

Make a beautiful festive wreath for your home or to give as a gift. All materials are provided but feel free to bring along any additional foliage or decorations you would like include. Adult only workshops are at 1.00pm and 2.00pm. Price includes a hot drink and a mince pie each! £20 per wreath; booking

essential: book online (incurs a fee) or call **01865 407792** during office hours.

As always, more information can be found on our website www.earthtrust.org.uk. All events take place at the Earth Trust, Little Wittenham, OX14 4QZ unless otherwise stated.

Massage Matters

Wishing all my clients a peaceful Christmas and a Happy New Year.

The salon will close on Sunday, 10th December, until Wednesday, 3rd January, but you can book now for January treatments. Start the New Year relaxed!

Gift Vouchers are available as the perfect Christmas present.

Based at The George Hotel, Dorchester. Entrance off the High Street.

To book please call **077250 62259** or email massagematterstome@gmail.com – for more information visit www.massagematters.me.uk



Bonfire Night in Dorchester



Pure Fluke playing at the pavillion



The (wine) bottle stall



Some of the stalls

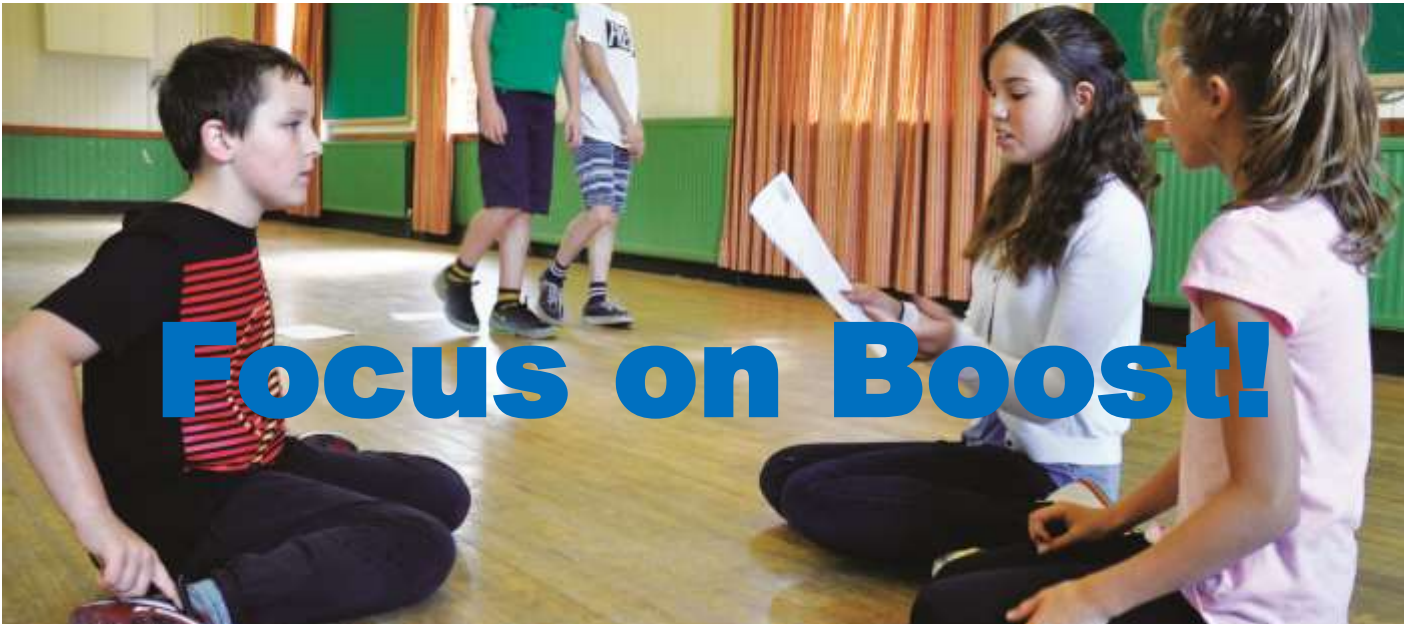
Photo: Martin Wackener



We have spent the week clearing and counting and congratulating after another super-successful fireworks event. The evening was clement, the display spectacular and the fire and winter Pimms left everyone with a warm glow. On top of the fun and fundraising, the thing that strikes us yet again is how supportive, helpful and community-minded people are here in Dorchester, as so many people gave up their time to help get the event off the ground. This event raised over £4,000 for Footsteps Foundation, which will fund an entire year of therapy for a disabled child in need – what an achievement!

We could not have held the event without the help and support of the Parish Council so would like to thank them for this. There are so many people who helped, we cannot list them all but special mention must go to the fantastic fireworks planning team, including Sue, Val, Rachel, Linda and Maggie M. Huge thanks to Claire for the smooth running of the delicious BBQ and all who volunteered with her. The bar was run by Dave and the British Legion and we had many remarks about the delicious cakes organised by Anne. Thanks to Ian for compering and to Paul and Andy for managing to recruit an army of tent-erectors and fire-builders on a chilly Sunday morning – you guys were great! Thanks to Robin and Nick for setting up all the electrics and to RAF Benson for lending their lovely tents. Thanks to Carol-Ann and Catherine for running the Wine Lotto and Judith & Liz the popcorn stall. Thanks to Linda and Tim who helped keep things tidy and to those people who helped to clean up on the Monday – an underrated yet essential job! For the first time this year we had the fantastic acoustic ukulele group Pure Fluke, who came to keep people entertained and Emily brought her pretty horsebox and sold coffees to queuing crowds, all in aid of Footsteps. Martin came and took some lovely photos of the event for our records and the local Coop supported us by sending volunteers and a grant to help with refreshments. There were many other helpers and if there is anybody we have left out it is not because your efforts were not appreciated and please be assured we are so grateful for this wonderful effort.





Tucked away in a quiet corner of Dorchester is a nerve centre of a small business that has the ability to improve a lot of people's lives. This is **Boost!**, an organisation that offers drama clubs and classes to children and adults alike, run by Caroline Seed.

The ethos of Boost! is to give children, or anyone else, but mostly children, an opportunity to develop their interpersonal skills and their overall character through the use of drama. For many this means improving their self-confidence through acting in front of others; for those who are already confident, it may mean learning to listen, to empathise and to co-operate with others or to work as a team, all of which are essential ingredients in drama.

Boost! offers a range of opportunities, that include after school and Saturday drama clubs, workshops in the school holidays and preparation for LAMDA exams. Currently they work with six

schools in the area, including our own Dorchester Primary School, where they have a particularly successful after school club. Caroline says:

'I love working with the children at Dorchester. They co-operate really well across different year groups and really support each other.'

There are many organisations in the area offering regular musical theatre training but **Boost!** focuses very much on acting excellence and drama as a means to develop social skills. Whilst performing is clearly important, other aspects of drama such as learning to sit and listen, to take one's turn, to make constructive comments, and to respect what the director says, even when that is a classmate or friend, all contribute to developing a rounded person, who is confident, able to work with others and to contribute in their way to the team's performance. And Caroline is not necessarily looking for polished performances from every child.

Both she and Boost! Club Leader, Maria Crocker, observe the individual needs of each child. Some are naturally good at improvisation, for example, whilst for others it is quite scary. So they won't push or cajole the child into something until they feel that the time is right, and the child is prepared to do it.

Caroline herself originally trained at the Royal Central School of Speech and Drama, but later trained as a teacher for the LAMDA exams, before setting up her Saturday morning LAMDA classes and her first club here in Dorchester in 2012. For those who take their acting more seriously, one to one LAMDA lessons are a really good addition to attending a drama club. The LAMDA syllabus offers exams to suit children from as young as 5 who can take introductory exams involving the performance of a poem and a discussion with the examiner about a toy, picture or book that the child is asked to bring with them. Students can continue through the grades from 1 to 8 and there is no upper age limit for any of these exams which involve the performance of monologues or duologues of increasing challenge or complexity. At the highest grades they can count for up to 30 UCAS points in support of university applications.

Not everyone, of course, wants to take the exams or to get a LAMDA certificate, but it can still provide a structured framework with which to follow a course of acting training.

Caroline and Maria run clubs for children from the age of 4 to 16. Caroline says that a class she takes of 11 to 16-year-old



boys is one of the most rewarding. 'They like to keep me on my toes' says Caroline. 'There is no slacking with them. Classes have to be fun and challenging. Their improvisational skills are formidable; at times it's like watching an episode of *Mock the Week!* They have me in stitches.'

Not every pupil wants to grow up to be an actor. But the discipline of learning about drama and how to act helps them in many ways, both interpersonally and intellectually. From an early age, pupils are taught to study a character, to find out what might have made them the person they have become in the play. They are encouraged to 'fill in the gaps' about what they know of the character they are playing – where they might live, what sort



Grant and it was Dean who replaced Hugh Grant as he was hurled through a window) whilst his television credits amount to just about everything you could possibly think of, including *Game of Thrones* and *Coronation Street!* I imagine

the Bicester Advertiser as 'Thrilling' and 'a production of great wit and imagination'.

The business has grown. And business it must be, albeit Caroline appears to care more about developing the children than developing her bank balance. But from a Saturday workshop five years ago, there are now courses in six local schools, and in the new year they will be able to offer a more extensive range of LAMDA exams including public speaking and verse and prose, when they will be joined by someone with considerable experience in these areas. This could broaden the audience for the business to include more adults who feel they need of this sort of training. Watch this space.

But for Caroline, it is not about getting



of lifestyle they have, who are their friends, where they just came from and where are they going to go next? Understanding this helps them to understand that people have different lives, different from their own. It not only makes them better actors but personally more empathetic.

And of course, it is all great fun. In the summer holidays Boost! ran two holiday workshops, a one day 'Introduction to Shakespeare' and a three day 'Dramatic Combat' course which was run in collaboration with locally based Film Stunt Co-ordinator and performer, Dean Forster. Dean taught the children how to fight with and without weapons and Caroline put them together with some of Shakespeare's most famous fight scenes, including the opening scene in *Romeo and Juliet* and the lovers' brawl in 'A Midsummer Night's Dream'. Dean's film credits include two Harry Potter movies, *The Bourne Ultimatum*, *The Da Vinci Code*, *Mission: Impossible* and *Bridget Jones's Diary* (He choreographed the street fight between Colin Firth and Hugh

that he was able to make Shakespeare come alive to every child there.

Earlier this year Caroline directed a production of *Bugsy Malone*, performed by pupils of St Birinus School, Didcot and from Didcot Girls' School. The Facebook and Twitter feeds show how much the actors enjoyed it and it was described in

people to do exams, or training them to pass well, or necessarily putting on wonderful productions. Of course, if that is what pupils want to do, then she is there to help them to do it. But for most of her pupils, it is about learning through the process; learning about themselves and about others, and emerging as better, more rounded people.

Caroline trained at the Central School of Speech and Drama and now teaches the LAMDA course.

Central School-trained actors include:

- Kevin Whately**
- Zoe Wannamaker**
- Catherine Tate**
- Rufus Sewell**
- Jennifer Saunders**
- Laurence Olivier**
- Graham Norton**

LAMDA-trained actors include:

- Benedict Cumberbatch**
- Maureen Lipman**
- Martin Shaw**
- Jim Broadbent**
- Patricia Hodge**
- David Suchet**
- Toby Stephens**

Friends of Dorchester and Little Wittenham Open Spaces Update



Over a year has passed since the purchase by Andrew Reid, a London-based lawyer and property developer, of the Bishops Court Farm estate. Subsequent events led one local cleric to pronounce that there has not been such unity of purpose in the village since the Second World War.

Within days of completion of the purchase those who had been accustomed under the previous farm owner to walking freely over the meadows between the village and the Thames to local beauty spots like the Dyke Hills, Wittenham Clumps and Days Lock found themselves channelled instead into narrow barbed wire corridors as Mr Reid's workers fenced off all the fields, leaving only narrow margins along river banks. Boat owners were banned

from mooring on the banks of Mr Reid's fields and local fisherman denied the access they had previously enjoyed.

Anyone purchasing land has the right to farm it as they wish. Some 'tidying up' of the estate was to be expected since Mr Reid wants to turn it essentially into a sheep and cattle farm. But traditionally in the countryside there is an unspoken code. Obligations are accepted on both sides. Local residents appreciate that fencing is needed to safeguard livestock: they take care to close gates, control dogs and report any distressed or injured animals. Landowners accept that they are part of a community: they respect local custom and allow reasonable access to parts of their estate especially where walkways have been long used.

In this case, without any prior consultation with the community or the Parish Council locals woke up almost overnight to a total transformation of their landscape. Instead of being free to roam across fields as they had done for twenty years and more they found themselves corralled into those narrow barbed wire tunnels. Mr Reid's workers bulldozed and burned hedgerows, destroying wildlife habitats and upsetting dog walkers, ramblers, birdwatchers and the families whose children have for decades picnicked and played on the fields under the previous owner.

Mr Reid's representative agents claimed (erroneously) that the village had been virtually in a state of war with the benevolent previous owner of the land, the late Miss Bowditch, and that there was a serious litter problem. He is planning also to fence off the

Dyke Hills, the very first piece of land protected by law as an Ancient Monument in 1882.

Following a public meeting in January attended by more than 200 people a local action group FODLWOS (Friends of Dorchester and Little Wittenham Open Spaces) was established. FODLWOS is seeking to preserve public access to parts of Mr Reid's lands both by having the official footpaths map updated and by having part of the Days Lock meadows on Reid's estate declared as a village green. This can be done legally because of the rights established by regular recreational usage over several decades.

FODLWOS is making a similar village green application for part of the Dyke Hills. Karen Bradley, the Secretary of State for Digital, Culture, Media and Sport is being pressed for a public inquiry into fencing of the Dyke Hills over which Historic England have received a record number of complaints.

Hoping to establish a better atmosphere and to start building a more mutually beneficial relationship between the estate owner and the local community a small group from FODLWOS met with Mr Reid in the summer. The possibility of the local community seeking to purchase the disputed parts of Mr Reid's lands was raised but it became clear that he would be seeking a sum per acre which was so far above the normal agricultural rate that this would be impracticable.

A planning application for a large new house and stables at Bishops Court Farm has been turned down by South Oxfordshire District Council after a number of amendments and considerable local objections.





Reid's land are being pursued. Some regularly-used paths were registered in the past, some were not. A right of way is deemed to have become 'dedicated' after 20 years of continuing use. FODLWOS has a large dossier of photographs and other proofs confirming long-time continuing use by the public of these paths with far wider access than the new barbed wire constrained pathways provide. Success in those applications would not change the ownership of the land but it would re-establish the historical usage. Unfortunately there is currently a 12 to 15 year backlog in consideration of such applications by Oxfordshire County Council.

Gates

The new gates established at the end of Wittenham Lane and in the middle field path were installed with temporary permission from OCC after Mr Reid's workers said that the fences around the Dyke Hills were insecure and that sheep might escape to the High Street. FODLWOS has pointed out to OCC that the barbed wire fences have now been made secure and the council is now investigating with a view to rescinding the temporary permission. The gates contravene the provisions of the Disability Discrimination Act and are being opposed by the Parish Council. The Open Spaces Society is supporting the case for their removal.

This is now the state of play:

Village greens

The applications, supported by more than 400 completed questionnaires, have been lodged with Oxfordshire County Council. Dorchester's County Councillor, Lorraine Lindsay-Gale, told the Parish Council that it was hoped that the official consultation process would begin before the summer, but it did not. It seems that the unprecedentedly large number of questionnaires submitted in support of the application has slowed things down. The full process is expected to last from two to three years.

To help to persuade OCC to prioritise the case FODLWOS and the Parish Council

are working together to collect evidence of the effect that the fencing has had on tourism and the local economy. It is clear for example that the boating community are now mooring elsewhere and so are no longer coming to spend money in Dorchester's pubs and stock up at the Co-op.

Footpaths

The Countryside Rights of Way Act 2000 has set a deadline of 2026 for rights of way to be registered on the Definitive Map (DM) held and maintained in Dorchester's case by Oxfordshire County Council. The fencing issue has been a wake-up call and applications for long-established rights of way across Mr

If you have any questions or require further information, then email rightsofwaydot@gmail.com






REMLOC PLUMBING & HEATING LTD
*Trading Standards Approved
 Gas Safe & CIPHE Registered*

- Boiler Servicing
- Central Heating Installation
- General Plumbing
- No Job too Small
- Free Estimates
- Emergency Call-outs

01235 536345 / 07709 961 655
www.remloc.co.uk / email: info@remloc.co.uk



Professional Building Advice
 Planning to Building Completion • Domestic & Commercial
Construction Project Management
 Chartered Surveyors 25 yrs experience

Mark G Bristow MRICS, MAPM, Cert Mgt BSc Hons
 M 07912 476 636 T 01865 343552
info@markbristow.co.uk

The 2017 Annual Friends of Dorchester Abbey Lecture

The Annual Lecture was given on 28 September by Dame Helen Ghosh, Director General of the National Trust

Enthusiastic, passionate, energetic, informative, inspirational, entertaining.....I could go on. These are some of the words that came to my mind as I think about this very stimulating lecture given by Dame Helen Ghosh.

She started by addressing the myths propagated by the media's current propensity for 'fake news'. As she said robustly, the National Trust is not:

- proposing to introduce wolves (referring to accusations of 'rewilding')
- cancelling Easter (the condemnation of the NT for axing 'Easter' from the 'seasonal' egg hunt)
- replacing the contents of Trust properties with bean bags
- becoming political

However, as she then pointed out, 70-80% of the media coverage of the Trust is positive.

Clearly proud of her background as a historian (she read History at St Hugh's College) she then took us through a most instructive romp through the history of the Trust from its beginnings in 1894 led by its three founders, the social reformer Octavia Hill, the civil servant Sir Robert Hunter and the countryman Canon Hardwick Rawnsley. While a mere 100 members attended the original meeting of the new Trust in 1895, the week of this talk in 2017 enabled Dame Helen to celebrate the 5,000,000th member of the organisation.

Interesting to note was the first National Trust Act of 1907 which articulated its purpose as:

promoting the permanent preservation of lands and buildings of beauty or historic interest, and as regards lands, for the preservation of their natural aspect features and animal and wild life, for the benefit of the nation (my emphasis)

In her talk she covered four strategic areas or priorities. These were introduced with enthusiasm and passion, and impressively illustrated with examples of current Trust activities and initiatives.

Conservation or 'looking after what we have' The Trust spent £137m. last year on conservation projects, and, as Dame Helen said, 'conservation is at the heart of what we do'. Increasingly this is conservation in action.

The natural environment. This is a commitment to the restoration of a healthy, beautiful natural environment. This priority is undertaken both in partnership with Trust farm tenants and with

other organisations such as RSPB

Inspirational experiences. Using the Trust properties to move, teach and inspire visitors

Support for local initiatives, such as Heritage Open Days, work with local authorities to enhance parks and open spaces, help with public buildings.

The talk ended with a quote from one of the Trust founders Octavia Hill who wrote in 1883:

'we all need space; unless we have it we cannot reach that sense of quiet in which whispers of better things come to us gently. Our lives in London are over-crowded, over-excited, over-strained. This is true of all classes; we all want quiet; we all want beauty for the refreshment of our souls.' Octavia Hill went



on to write in this piece: *'sometimes we think of it as a luxury, but when God made the world, He made it very beautiful, and meant that we should live amongst its beauties, and that they should speak peace to us in our daily lives'*

As Friends of the Abbey, we are blessed with our access to the peace and beauty of this place in which we can find that 'sense of quiet in which whispers of better things come to us gently'.

I imagine that a majority of the audience were Trust members and the talk was followed with a Q&A session in which Dame Helen addressed a range of issues with authority and reassured the audience that the Trust is in very competent and forward thinking hands. The lecture was a high spot in the series of annual lectures of the Friends.

Ingrid Lunt
September 2017

Above: Dame Helen Ghosh

Top: Local National Trust property, Nuffield House

From your County Councillor... ...Lorraine Lindsay-Gale



The race is on for driverless cars

News that ground-breaking transport technology being pioneered in Oxfordshire has won a share of a £51million government prize has been welcomed by two council leaders. Oxfordshire is home to Science Vale UK and some world leading science and technology companies who are blazing a trail towards more energy efficiency and road safety. Organisations based in the Science Vale are working on pioneering projects such as autonomous cars and smart traffic management systems needed to support people travelling around the county. Remote Applications in Challenging Environments (RACE), which is based at Culham Science Centre in Oxfordshire, is to receive £6.9m from the Department of Transport towards their £10million project to set up a range of different test areas mimicking increasingly realistic city driving environments, where automated vehicles can be tested before being taken onto public roads. They are one of a number of companies that Oxfordshire County Council and South Oxfordshire and Vale of White Horse District Councils works with to drive progress on future transport technology.

Apply online for primary school places

Applications for children due to start primary school in September 2018 can now be made online. Families with children born between 1 September 2013 and 31 August 2014 are urged to visit the primary school admissions pages on the county council's website to find out how to apply for places for next year. The council still accepts postal applications but recommends families apply online where possible, as this helps speed up the applications process. It also means families receive an automatic response confirming their application has been received and can be quickly notified if further information is needed. Those who apply online will also receive an email on allocation day, 16 April 2018, informing them of the outcome of their application. Postal application forms are available from all Oxfordshire schools and from reception at County Hall in Oxford.

Help someone get online – be a digital helper at your local library

Oxfordshire County Council recently launched a campaign to recruit 'digital helpers' in libraries to boost the confidence and skills of those who need extra help to get online. Volunteers able to give up just a few hours a week are being sought at branches across the county to provide one-to-one support for people with little or no experience of using computers or the internet. The aim of the campaign is to help people:

- access services online – including council services
- access employment or training opportunities

- become more independent
- reduce isolation

To find out more or to sign up as a Digital Helper visit: www.oxfordshire.gov.uk/digitalhelper

Oxford's new Westgate Centre opens

Traders welcomed a bumper weekend at Oxford's new Westgate as thousands of people packed the shopping centre on its first weekend in operation. Shops and restaurant chains said interest from customers had exceeded expectations, with business more brisk than at any other opening they had experienced. Some 60 out of 125 shops and restaurants at the £440m shopping centre opened on Tuesday 24th October, with others opening since, and thousands of people took advantage of their first opportunity to have a look around. Councils, transport operators and Westgate have been working closely on a coordinating travel plan aimed at making it as easy as possible to visit the Westgate and minimising journey times into the heart of Oxford. The best way to travel into the city centre is to use the park and rides or public transport wherever possible. New variable message signs have been installed on the outskirts of Oxfordshire to update people on space availability on the park and ride sites nearby and to direct them there. There are also temporary signs within the ring road which give directions, for those who have chosen not to use the park and rides, to city centre and Westgate. There's more information on travelling to the Westgate at:

<https://westgateoxford.co.uk/your-visit/getting-here>

Oxford to Cambridge Expressway

The Action Group making the case for the Expressway to go to the West and North of Oxford has expanded to 23 Parish Councils and has embarked on an aggressive media campaign that was covered by local newspapers and the BBC. The National Infrastructure Commission led by Lord Adonis is going to announce their preferred route immediately prior to the Budget which is announced on 22 November. However, their opinion is only advisory, and it will be up to Highways England to make the final decision by the Summer 2018. They are proposing to do this without a period for public consultation which I and many others find totally unacceptable. I have the opportunity to lobby my Leader and colleagues at the County Council stressing that "west is best" and do so at every opportunity. But again, OCC's position currently is neutral, and is only that of a consultee once the decision by Highways England on which route has been taken.



T: 01865 890548

F: 01865 890198

E: info@fourwindsgarage.com

Local, Professional Vehicle Technicians

- MOT's
- Servicing
- Repairs
- Diagnostics
- Bodywork
- Welding
- Free collection and delivery
- All makes covered



ARBOCARE LTD.
TREE AND
GARDEN
SPECIALISTS



NATIONAL TRUST
APPROVED ARBORIST

- Established 20 years
- Tree surgery & landscaping
- Tree survey / reports
- Grass & hedge cutting
- Fencing

Cert Arb RFS (Distinction)

Freephone 0808 155 5815

Mobile 07778 811 136

www.arbocare.co.uk



St Mary's Dental Practice

Dr Ash Ratti (BDS Hons) Kings College London
www.stmarysdental.co.uk

21a St Mary's Street
Wallingford Oxon OX10 0EW
Tel 01491 825252

We are a family orientated Practice located in the centre of Wallingford providing care and consideration from all members of my team to help provide you with all aspects of your dental requirements.

For further information, or make an appointment, please call my Receptionist on 01491 825252



— Truly a Home from Home —

Winterbrook Nursing Home

Where Care comes first

- Idyllic setting with picturesque gardens
- 24 hour professional nursing care
- Long & short term care • Convalescent care

Wallingford (01491) 833922

18 Winterbrook, Reading Road, Wallingford, Oxfordshire OX10 9EF

Monthly Meetings - December and January

The next two meetings will take place in the back room of the Village Hall on **Wednesday 13 December** and **Wednesday 10 January** commencing at 7.30pm. The Agenda will be posted on Village notice boards and on the Parish Council section of the Village website -

www.dorchesteronthames.co.uk - at least three clear days in advance of the meeting. All Parish Council Meetings are open to the public. All are welcome to attend and, at the beginning of the meeting, may raise any matter of concern.

Contacting the Parish Council

The Parish Clerk is Geoffrey Russell of The Pigeons (next to The Fleur de Lys), 5-7 High Street, Dorchester on Thames OX10 7HH

Telephone (during normal office hours, please, unless an emergency) **07745 311439**. Texts are always welcome.

e-mail: parishclerk@dorchesteronthames.co.uk

Cllr Chris Hill, the Chairman of the Council, can be contacted via chairman@dorchesteronthames.co.uk

More information about the Village is available at www.dorchesteronthames.co.uk



**T.W Hayden
Heating Services**

Tel: 01865340720
Mobile: 07813904055
E-mail: Twhayden@tiscali.co.uk

All plumbing and heating works undertaken.
Free estimates.

15 Fane Drive, Berinsfield,
Wallingford, Oxford, OX10 7NB

**STEVE WILKINSON
PROPERTY MAINTENANCE**

**Painting, Plastering, Stonework,
Fencing, Patios, Repointing,
Carpentry, Garden Tidying, Etc.**

Telephone: 01865 891554
Mobile: 07885 538514

Neighbourhood Development Plan

Just prior to the conclusion of District Council Public Consultation period on 27 October we were informed of the appointment of the Planning Inspector who will conduct the Examination of our NDP. His name is Mr Andrew Ashcroft and he had already visited Dorchester for a preliminary visit to familiarise himself with the village in the first week of November.

Following some initial clarification of details in the NDP his work will begin in earnest and as our NDP is relatively straightforward it should be completed in the following weeks. By the time you read this we hope the Inspection will be over and that SODC will be considering the outcome. In other words, that Phase 2 has completed and Phase 3 in the time-line below is in progress:

1. Once submitted the District Council has to publicise the NDP for a minimum of six weeks. Completed.
2. Examination by an Inspector is eight weeks (this is not regulated; it could be done more quickly but it could also take longer).
3. The District Council has five weeks to decide if the NDP should progress to a referendum once the examiner's report is published.
4. Once the decision to progress to referendum is published the District Council has 56 working days to hold a referendum (there are exceptions to this) - we have to publicise the notice of referendum for 28 working days within those 56 days.
5. The District Council then has eight weeks to decide whether to adopt the plan following a positive referendum result.

**Chris Hill
NDP Steering Group**



BRYANS LOCK SERVICES

Phone: 01865 340138. 01491 520820.
01235 420742

Locks Supplied-Fitted-Serviced-Opened-Replaced for
Timber- Aluminium- Steel, PVCu doors & windows.
Keys cut to pattern.
Keys to number for office furniture.
Supply Safes, Document & Media Cabinets & Files
Locks to Insurance Company Specifications.

Master Locksmiths Association Approved Company.
Reg. No. 002623

Planning Matters

Local Plan

The South Oxfordshire Local Plan 2033 is now live and the documents can be viewed on our website. This publicity period is more formal than the previous four consultations, as the Planning Inspectorate dictates the specific questions we must ask relating to the soundness and legality of the plan.

We have prepared a guidance note and a short video to help explain the process in more detail. You can find these at:

<https://southandvale.us8.list-manage.com/track/>

Video: <https://southandvale.us8.list-manage.com/track/>

We have held a series of drop-in events throughout the publicity period.

Please note that the Local Plan 2011-2033 consultation has been extended. The extension is to provide people the opportunity to comment on an update to the Strategic Housing and Economic Land Availability Assessment, which we originally published in March. You can view the updated assessment here.

<https://southandvale.us8.list-manage.com/track/click?>

All responses to the local plan must be received by **5.00pm** on **30 November 2017**.

Neighbourhood Plan update

Dorchester-on-Thames Parish Council has submitted its draft neighbourhood plan to South Oxfordshire District Council and the consultation has now closed. We are now submitting the draft neighbourhood plan to an independent examiner. We will provide you with the information once it has been published.

Oxford to Cambridge expressway

You can view and comment on four early concept designs for the Oxford to Cambridge Expressway. The National Infrastructure Commission will ultimately make a recommendation to government for the final decision on the route.

You can see all four design concepts and submit your comments here. <https://southandvale.us8.list-manage.com/track/>

South Oxfordshire District Council

Monthly Report November 2017

Berinsfield Community Investment Scheme

We have produced a leaflet to be delivered to all residents, organisations and businesses based in Berinsfield. The leaflet explains that we plan to build up to 1,700 homes to help raise the funds needed to provide the facilities and services that residents identified were important.

Once we have received feedback from this initial plan, we will use feedback and comments received to create our masterplan for Berinsfield. We plan to publish the masterplan in Spring 2018 when it will become part of a formal consultation.

Download your copy of the leaflet here.

<https://southandvale.us8.list-manage.com/track/>

New parliamentary constituency boundary proposals

The Boundary Commission for England has published proposals for new parliamentary constituency boundaries, which affect our districts.

You can view the proposed plans here

<https://southandvale.us8.list-manage.com/track/>

The deadline to submit any comments is **11 December**.

Go Active Juniors

Do you know a sports club that needs support to help young people become more active?

We've launched Go Active Juniors - a new project for anyone up to 18 years old. The project aims to increase participation in sport and physical activity by getting young people active in our area.

The team offer a range of support including helping to find new coaches to deliver sports sessions, assist clubs to set up new activity sessions and help clubs with equipment.

Get in touch with Emma Freeman if you know of a sports club that could benefit from our support.

Emma.Freeman@southandvale.gov.uk

New community lottery

We're setting up a new online lottery for our residents to help raise funds for local community groups and charities.

Residents can enter a £1 weekly online draw and be in with a chance of winning prizes ranging from free prize draw tickets right up to the £25,000 jackpot. Each £1 ticket bought has a 1 in 56 chance of winning a prize and nearly 60p of each ticket price will go to a local good cause.

We hope to launch the lottery early next year but if you'd like any further information please email Sally Truman (Sally.Truman@southandvale.gov.uk)

Hate crime - new guidance

Please make yourself familiar with new guidance on dealing with hate crime. We all have a duty to take hate crime seriously and advise people of the reporting options available to them. Hate crimes are any crimes that are targeted at a person because of hostility towards a person's perceived:

- disability
- race or ethnicity
- religion or belief
- sexual orientation
- transgender identity

You can find out more about how to protect yourself and others on the Thames Valley Police website or contact the community safety team for more information on our guidance communitysafety@southandvale.gov.uk

Recycling, rubbish and waste update

Our new fleet of vehicles are now out and about on collection rounds. There are two different types of vehicle - one large truck for recycling and household waste and smaller one for food waste recycling. Previously waste was collected in different compartments on the same lorry - but this has now changed. This means that collections are being carried out at different times of the day.

There are no changes to collection days or the way you will need to put out your bins.

'Don't bin your batteries' call following waste and recycling truck fires

Residents in South Oxfordshire are being urged not to put batteries or other items which could cause a fire in their waste or recycling wheelie bin.

Recently two small fires started in rubbish while it was being transported in waste and recycling trucks. Both were potentially very dangerous incidents to the crews, other road users and pedestrians. They also caused delays to collections and could have resulted in significant damage.

Batteries should be put in a clear plastic bag and left on top of the green recycling bin, while small electrical items, that may also contain batteries, can be put out in a carrier bag alongside the grey refuse bin for separate collection.

BE in Science Vale UK campaign

For the first time we are running a series of adverts in selected train stations throughout the South East and on social media to raise awareness of the Science Vale UK brand.

The campaign is using the new BE in Science Vale UK strapline to promote the area and will take the form of a series of different posters on platforms and on ticket gateways

For more information on the Science Vale you can visit the website here.

<https://southandvale.us8.list-manage.com/track/click?>

Berinsfield Health Centre

The following was discussed at the Berinsfield Health Centre Patients' Participation Group on 19 October 2017:

Berinsfield Health Centre is highly rated

Two practices in our area have been highly rated in a national ranking of GP practices and Berinsfield came out top. Congratulations to the excellent team of GP's, Nurses and Staff.

Staff Changes

Dr. Claudia Jones retired in June and the partners are now Dr. Jonathan Crawshaw and Dr. Helen Clark, assisted by four part time GPs. The practice continues to be a training practice.

CCG

The SW locality plan for the future will be published in early November 2017 on the Oxfordshire Clinical Commissioning Group (CCG) website. The South West Oxfordshire GP Locality Clinical Director is Dr Jonathan Crawshaw of Berinsfield Health Centre.

New Appointment System from end of January 2018

A new Triage Telephone System will be introduced which will:

- Reduce waiting time for patients to talk to or see a GP.
- Reduces frustration at not being able to talk to the GP on the day that the patient wants to.
- Avoids wasting the patient's time in coming to the Health Centre when he/she may not need to.
- Increases the patient's safety by ensuring that he/she can talk to a GP on the same day.

Federation of GP Practices

Appointments are available 7 days a week, at evening and weekends, on a rota basis, thanks to the joint effort of GP practices in Abingdon, Berinsfield and Clifton Hampden.

Housing in Berinsfield

If the proposed 1700 new houses are built in Berinsfield, it is expected that there will be provision for a new Health Centre to allow for growth of the practice.

Future Meetings

The time of future meetings has been changed. The next meeting will be held in the Health Centre on **Thursday, 26 April 2018 at 7.00pm**

Berinsfield Surgery Voluntary Car Service

The voluntary car service, at 10.00am on Wednesdays, is for patients needing transport to the Health Centre. If you need help to visit Berinsfield Surgery, make an appointment for a forthcoming Wednesday morning. Mention that you will be using the **Dorchester Surgery Car Service**. You will be given an appointment for 10.00 o'clock. Then call Dorchester Fireplaces on **01865 341452** before 2.00pm on the Tuesday before the appointment. Give them your address and phone number. A volunteer driver will collect you from your home shortly after 9.30am and take you to the Surgery in good time for your appointment. **Dorchester Fireplaces Showroom** is open 10.00am to 4.00pm Tuesday to Saturday.

Email: enquiries@dorchesterfireplaces.co.uk



JENKS OXFORD
Queenford Farm, Dorchester

Jenks Oxford are based here in Dorchester and so are convenient for all your tree needs.

Ask for a free site consultation and quotation on our full range of general and specialist services from our qualified professional staff.

Tree felling & removal - Pruning - Tree surveys - Diseased or unstable trees - Stump removal - Hedge cutting... and much more, just ask, and with £10 million public liability insurance for peace of mind.

FREEPHONE 0800 458 3328
Info@jenksgroup.co.uk www.jenksgroup.co.uk

Proud to sponsor **FOOTSTEPS** and DOT Under 10's football team

County Council approved. Arboricultural Association Approved. NPTC & Lantra Qualified. **WHICH?** Approved.

PACT Carol Concert



PARENTS AND CHILDREN TOGETHER

Back by popular demand, PACT's annual carol concert is being held once again at Dorchester Abbey on **Sunday 10 December**.

Light refreshments will be served from 4.00pm-5.00pm with some fun activities for children. This will be followed by the carol concert at 5.00pm-6:30pm with performances from the Abbey Choir, Benson Military Wives Choir and professional soprano Erin Hughes, as well as lots of opportunities for the congregation to join in for classic Christmas carols.

The carol concert is free to attend but there will be a retiring collection to raise funds for PACT's award-winning therapeutic support services for adopted children.

We look forward to seeing you there and encourage you to bring friends and the whole family to join in the festivities and support PACT's vital work.

Tickets are free but must be booked in advance via PACT's website: www.pactcharity.org/carols

Tickets are limited so please don't delay and register for tickets today.



Health and wellbeing for the over 60's

Keep Fit Senior Circuits

Dorchester Village Hall

Wednesdays 10 am - 11 am

£4 per class



Improve bone density, balance and fitness!
Wear Comfortable clothing

To book contact:

Annalie Thomasson on 07766 991487
annalie.thomasson@southandvale.gov.uk



44



BERINSFIELD LIBRARY

Visit your Local Library
and see what we have on offer

Christmas craft Afternoon
Wednesday December 20th 3.45pm

Rhymes for the Under 5's Wednesdays 10.30am

Storytime Wednesdays 3.45pm

I.T Help Thursdays 2.00pm

Knit and Natter
5th December 2.30pm & 2nd January

Reading Group
14th December 2.00pm 11th January

Coffee Morning
19th December 10.30am 16th January
All Welcome



Here to help



join in • explore • discover • log on

Oxfordshire Expressway Action Group Fighting for Oxfordshire's countryside – once it's gone, it's gone.



The Oxfordshire Expressway Action Group consists of over 23 villages from across Oxfordshire representing over 25,000 people and more are joining every day. The Group is trying to find out more about the Oxford to Cambridge Expressway and the proposed routes to encourage proper public consultation before any decision is made. We are calling for a full public inquiry into this proposed new motorway route and development corridor for 100,000 houses because we believe that ten miles of Oxfordshire's green belt, unspoilt countryside and irreplaceable wildlife havens are at risk of being concreted over without any proper public consultation or a democratic mandate

Peter Rutt, Co-ordinator of the EAG, commented, "Because these proposals have been kept so quiet or discussed behind closed doors, most people in Oxfordshire have had no idea the proposed Oxford to Cambridge Growth Corridor and its Expressway motorway even existed, or that there was any opportunity to comment on these proposals. Oxfordshire deserves to be consulted on a project which would massively affect its residents' quality of living. Without a full public inquiry to examine the environmental, housing and amenity impact of each Expressway route, we could end up with the worst of all outcomes. The thousands of Oxfordshire residents impacted by these huge changes deserve to have their voices heard."

The Expressway Action Group -key points we are raising with potential influencers on the route decision – please help us by liking our page, writing to your MP, Councillors, local media and sharing our posts and press release.

The Routes: The EAG realised in August 2017 that there are basically two options for this new Motorway. Either, the A34 is sorted and enhanced with the £3 billion of government money being made available for this project OR a completely new motorway is built destroying 10 miles of the Green belt, countryside and wildlife havens of South Oxfordshire and the Thame Valley.

The arguments for the Northern Route are compelling.

- The A34 has to be improved no matter what happens. However, only the Northern route will sort out the A34 problems

properly with the full force of central government cash behind it.

- Only the Northern route connects the growth towns of Bicester and Buckingham and Banbury to the Expressway
- Only the Northern route links the new Expressway with the new East-West Rail link
- It would be far less invasive than a brand new road and would cost £400 million less. (But money is not the only issue as another objective is for 100,000 more houses...)

A southern route ...

- A southern route would separate the Expressway from the Rail Link and the new stations at Oxford Parkway and Bicester.
- The environmental, amenity and wildlife impacts of a Southern route would be catastrophic. It would destroy 10 miles of Green belt, causing massive damage to rural lands and wildlife and will change the character of the area forever.
- It represents a huge danger to the Thame and Thames Flood Plains and associated rare wildlife and their havens
- The proposed Southern routes don't achieve the aims of the Growth Corridor and 'Knowledge Spine' at all as they run along its southern edge. This route would produce more commuter-belt housing and even more traffic into London and the Southern commuter towns.

This is a fast moving story and if you want to know the latest situation please refer to the Village web site or the Facebook page

<https://www.dorchester-on-thames.co.uk/posts/>
or <https://www.facebook.com/dorchesteronthames/>

Berinsfield
Community Business

GARDEN, GROUNDS & PROPERTY MAINTENANCE



QUALITY, SERVICE & VALUE

T 01865 343715 E info@bcomb.co.uk
W www.bcomb.co.uk

The Acupuncture Barn

Acupuncture for Families
Appointments now available for:
Acupuncture, Facial Acupuncture, Moxa and
Cupping treatments
Chinese Medicine 5-Elements approach to treating you as a whole
Body, Mind & Spirit
Licenced Treatment Room:
High Street, Chalgrove, OX44 7ST

07879 403800
acupuncturebarn.co.uk

Flexible times by appointment



REVIVAL
BENSON

PAINTED FURNITURE • WALLPAPERS & FABRICS • ANNIE SLOAN PAINT •
LADIES CLOTHING BOUTIQUE • SUSIE WATSON POTTERY • CUSHIONS
• JEWELLERY • MIRRORS • CARDS & GIFT WRAP • CANDLES •
PAINTING WORKSHOPS • INTERIOR DESIGN SERVICE

33B High Street, Benson, Wallingford, Oxfordshire OX10 6RP
01491 832080 | revivalshop@hotmail.co.uk | /revivalbensonsvillage

Logs for Sale

Martin Drew

01865 343378 or 07774 170727



DORCHESTER FIREPLACES
INTERIORS

Visit our unique showroom, opposite the beautiful
Dorchester Abbey in one of Oxfordshire's most
picturesque villages, Dorchester on Thames.

- We offer a complete in house service from design to installation
- Our team of professional fitters are all fully qualified and HETAS registered
- Complimentary home or site visit
- Showroom open 10am to 4pm Tuesday – Saturday

Tel: 01865 341452 or E-mail
enquiries@dorchesterfireplaces.co.uk



CLEARVIEW
STOVES

HETAS

WOODBURNING STOVES FOR THE 21ST CENTURY

Larkmead
VETS

Outstanding Care for Pets, Farm Animals &
Horses throughout South Oxfordshire

- Open 7 days a week
- Ample parking and spacious reception rooms
- Extensive modern hospitalisation facilities, including orthopaedic surgery
- Sunday surgeries at Larkmead Didcot
- Regular Cat only Clinics at our Sutton Courtenay and Benson practices
- Personal emergency cover by Larkmead Vets, 24 hours a day, 365 days a year **xLvets**

CHOLSEY & BENSON 01491 651379
DIDCOT & SUTTON COURTENAY 01235 814991
HORSES & FARM ANIMALS 01491 651479

www.larkmead.co.uk





Wallingford Museum Bookshop

As usual, Wallingford Museum will close for its winter break (Dec, Jan and Feb) to prepare exciting new exhibitions for next year. The Museum will re-open on **1 March 2018**.

In the meantime, book-lovers and present-seekers should make a point of visiting Wallingford Museum's bookstall while the museum is closed for its winter refurbishment.

We have an excellent selection of good second-hand books (both fiction and non-fiction) at sensible prices. We'll be open through December, January and February - every Friday from 10.30am to 3.00pm, and every Saturday from 10.30am to 1.00pm.

We look forward to seeing you.

www.wallingfordmuseum.org.uk



'Treasures with Tales' Exhibition 2018

We need your help!

Most of us keep a few treasured items, not necessarily because they are 'valuable' but because they have a special significance. Often they are very simple things - like an ornament, souvenir, letter, picture, find, etc - but each has some sort of memorable story behind it.

Wallingford Museum is asking if you would share one or more of your '*Treasures with Tales*' to help create a very special exhibition for 2018.

Once you've had a think, please send details to: 'Treasures', Judy Dewey, Wallingford Museum, 52 High Street, Wallingford OX10 0DB, or phone **01491 651127**, or email:

admin@wallingfordmuseum.org.uk

We're hoping for a great response! The sooner we hear from you the easier it will be to plan the exhibition. It will open on 1 March 2018 and run until 30 November.

The last time we asked the public to lend us things we had a fantastic response and created one of our most popular exhibitions ever. We hope our '*Treasures with Tales*' will prove just as fascinating for the whole community!

www.wallingfordmuseum.org.uk

What's on in Wallingford



'Rena Gardiner: illustrating history'

Martin Andrews will talk to The Wallingford Historical and Archaeological Society (TWHAS) about Rena Gardiner. Artist and printmaker,

Rena Gardiner dedicated her life to the writing, illustrating and printing of over 45 beautiful books about historic buildings, towns and landscapes. Her work is now valued and collected and her contribution to twentieth-century book illustration has been recognised. This illustrated talk will bring the work of this remarkable woman to a wider audience.

Martin Andrews co-authored with Julian Francis on the first book on Rena Gardiner, published in 2015. Martin is a recently retired lecturer at Reading University, and has spoken at least three times to the society in the past.

This talk will be held on **Wednesday 10 January**, 7.45 for 8.00pm, at St Mary's Church, Wallingford.

Visitors (£4) are most welcome.

www.twhas.org.uk

Wallingford U3A

At our November Meeting Alastair Lack gave us 'An Anecdotal History of Oxford University'. He packed 800 years into a cheerful and interesting talk.

Our December meeting will be the Christmas Party at Crowmarsh Village Hall at 2.00pm as usual. Mulled wine, mince pies, entertainment and food. It's usually good fun.

Holiday: We are going to Norfolk for five days in June. For the itinerary and booking forms phone Eileen (**01491 825156**)

Theatre: *My Fair Lady* at Sonning Mill on **13 January** is fully booked, but there is a reserve list. There may be cancellations.

Agatha Christie's *The Unexpected Guest* also at Sonning Mill, is booked for **Saturday 30 June**. Forms will be available at the January meeting.

Lunch Club. **Sunday 10 December** at Goring and Streatley Golf Club. It is a special Christmas Lunch, and is usually a particularly enjoyable occasion. Mike Morfey is organising this, so for information please phone him direct on **01491 680505**.

For more information about what we do please visit our website. Google **u3awallingford** or phone Jill on **01491 835994**.

AKT | Planning+Architecture

Chartered Town Planners and Architects

AKT is a small established local practice based in Dorchester with a wealth of experience in all aspects of planning and architecture. We pride ourselves in providing a personal and bespoke service and have experience with listed buildings and conservation areas.

Contact Sarah or Paul King for an informal chat to discuss your ideas or projects.
Tel. 01865 340989



RTP

www.archkingtech.co.uk



RIBA

A member of the Royal Town Planning Institute and Royal Institute of British Architects



CORN
EXCHANGE
WALLINGFORD

December/January

Work on refurbishing Wallingford's Corn Exchange roof is in its final stages but the theatre won't open until the annual pantomime in January 2018. So in the meantime the cinema venue of choice is The Great Hall in Cholsey Meadows (the location is on the site of the former Fairmile Hospital, off the Reading Road).

The upcoming programme at Corn Exchange@TheGreatHall includes:

Friday 15 December: Stephen Sondheim's *Follies*, NT Live from the National Theatre. 7.00pm start. Please note there is no interval and the evening's programme will last around 2½ hours. Tickets £10. This is a stunning show and has received amazing reviews so don't miss it.

Tickets for all performances can be booked online at www.cornexchange.org.uk or bought for **cash** on the door at The Great Hall. More information about upcoming films plus directions/map to The Great Hall are available on the web-site.

It is fitting that the Sinodun Players' 70th annual pantomime is going to be the opening show at the new revamped Corn Exchange. The seats have been replaced, the auditorium is being redecorated and more of the original features of the building can be seen. **Booking** for the panto which is *Cinderella* opens on **Friday 17 November**. The Box Office will be open, telephone bookings can be accepted or online bookings will be available on www.cornexchange.org.uk.

Here's a little taster - Oh Boy! Fairy Godmother here. I've been creating Magic Moments for many centuries but now, sadly, my powers are waning a little. Thank goodness I have a lovely little fairy assistant, so help is always at wand! So It's Now Or Never! Book your tickets to see magic being made in the refurbished Corn Exchange Theatre, Wallingford. Help us make that wicked Lord Lucius Malfeasance disappear, so our Living Doll - Bella Cinderella - can Rock Around The Clock at midnight. Happy Days!

Gala Night performance on **Friday 12 January:** Ticket price includes a glass of sparkling wine and canapes and a complimentary programme.

Chiropodist

Third Thursday of each month,
1.00-4.00pm
Village Hall (back room)
21 December, 18 January
For an appointment, Jo Bennett,
07903 133469
Cost £15

Bell Motors

Behind H Cafe at the Berinsfield roundabout

MOT's while you wait
£15 discount on MOT's when you quote this advert

On site MOT bay and Workshops.
All makes and models catered for
Need a service give us a call.

Electronic diagnostics:~ engine management, ABS, air bags all undertaken.

Need a SERVICE. (**10 % discount** when you quote this advert)
We supply and fit exhausts, brakes, batteries
We will carry out any MOT work required. (tyres and air con please call for quote)

**Free collection of your vehicle,
or we will take you home and collect you upon completion.**

We will come out for breakdowns/recovery as needed.
Welding, you break it we will try and repair it, and not just your car!!

Garden machinery not starting we may be able to help?
All credit and debit cards welcome.

MOT's 01865 341039
WORKSHOP 01865 341155
MOBILE 07931970392

VICTORIA DYDE
— Bespoke Curtains —

Curtains & Soft Furnishings
Fabric samples and Track fitting service available

Challis Farm High Street, Long Wittenham, Abingdon, Oxon OX14 4QH
T: 01865 407197 E: mcknight1967@gmail.com

JEMINI

LET US DELIVER YOUR MESSAGE BY
HELIUM BALLOON
LUXURY CHOCOLATE DELIVERY
SOFT TOY DELIVERY
CHAMPAGNE & WINE DELIVERY
FLOWER DELIVERY

   
RING OUR CREDIT CARD HOTLINE
OXFORD 01865 242726
39-40 THE COVERED MARKET OXFORD

Day by day

Fri 1 Dec	Supper Club Julbord (Pre-booked only) 7.30pm Abbey Guest House
Sat 2 Dec	Dorchester FC Dorchester First v Chinnor A 2.00pm Recreation Ground
	Supper Club Julbord (Pre-booked only) 7.30pm Abbey Guest House
Sun 3 Dec	Advent 8.00am Holy Communion (1662) (Canon Sue Booy's)
	10.30am Morning Service
	6.00pm Advent Team Service
	Supper Club Julbord (Pre-booked only) 12.30pm Abbey Guest House
Thurs 7 Dec	Dorchester FC Dorchester First v Masons Arms First 2.00pm Recreation Ground
	Hft Concert 8.00pm Dorchester Abbey
Sat 9 Dec	OSJ Concert The Messiah 7.30pm Dorchester Abbey
Sun 10 Dec	Advent 2 8.00 am Holy Communion (1662) (Revd. Jon Roberts)
	10.30am Sung Eucharist
	PACT Carols 5.00pm Dorchester Abbey
Mon 11 Dec	Cranford House Junior Carol Service 4.30pm Dorchester Abbey
Tues 12 Dec	10.15am Short Communion
	Cranford House Senior Carol Service 4.30pm Dorchester Abbey
Wed 13 Dec	OSJ Carol Concert 7.30pm Dorchester Abbey
	Parish Council Monthly meeting 7.30pm Village Hall



Thurs 14 Dec	Queen Anne's School Carol Service 3.00pm Dorchester Abbey
Fri 15 Dec	Dorchester Primary School End of term service 9.15am Dorchester Abbey
	Reducing the Risk of Domestic Abuse Concert 7.00pm Dorchester Abbey
Sat 16 Dec	Dorchester FC Dorchester First v Oxford Brookes Fourth 2.00pm Recreation Ground
Sun 17 Dec	Advent 3 8.00am Holy Communion (1662) (Revd. Jennifer Morton)
	10.30am Family Service
	6.00pm Carol Service
Mon 18 Dec	Service at The Close 2.30pm
Wed 20 Dec	Village Carol Singing Meet outside Fleur de Lys 6.00pm
	
Thurs 21 Dec	Chiropodist Village Hall (see p32)
Sun 24 Dec	Christ mas Eve 9.30am Holy Communion (1662) (Canon Sue Booy's)
	4.30pm Crib Service
	11.30pm Midnight Service
	

Mon
25 Dec **Christmas Day**
8.00am
Holy Communion (1662)
(Canon Sue Booy's)

10.30am
Christmas Communion

Thurs
28 Dec **Service at Cheshire Home**
11.00am

Sun
31 Dec **Christmas 1**
Holy Communion (1662)
(Revd Marcus Braybrooke)

**OSJ
Strauss Gala Concert**
7.30pm
Dorchester Abbey

Weekly events

Tuesday	Coffee in the Abbey 10.30am-12noon Bellringing Practice 7.30pm Abbey Fishmonger 9.30am to 9.50am by War Memorial (p.34)
Wednesday	Holy Communion at Berinsfield Church 9.30am Song School Dorchester Abbey 5.00pm
Thursday	Baby & Toddler Group 9.30am – 11.00am Village Hall: (term time only)
Friday	Choir Practice 7.00pm Abbey

Regular events also appear in the Parish
Council's website:
www.dorchesteronthames.co.uk

Parish Registers

Funerals

2 Nov Paula Ferry

Church services in the Abbey appear in red.
More details can be found at :

www.dorchester-abbey.org.uk

For details of services at St Birinus RC Church
go to: www.stbirinus.co.uk



Day by day

Sat 6 Jan	Angelos Candlelit Arts Event 6.00pm Dorchester Abbey
Sun 7 Jan	Epiphany 8.00am Holy Communion (1662) (Canon Sue Booyes) 10.30am Morning Service
Tues 9 Jan	10.15am Short Communion
Wed 10 Jan	Lunch Club 12.30pm Village Hall Parish Council Monthly meeting 7.30pm Village Hall
Sun 14 Jan	Epiphany 2 8.00 am Holy Communion (1662) (Revd. Jon Roberts) 10.30am Sung Eucharist
Mon 15 Jan	Service at The Close 2.30pm
Thurs 18 Jan	Chiropodist Village Hall (see p32)



Sun 21 Jan	Epiphany 3 8.00am Holy Communion (1662) (Revd. David Haylett) 10.30am Family Service 5.00pm Evensong
Wed 24 Jan	Lunch Club 12.30pm Village Hall DoT Historical Society Prof Greg Stores and AGM 7.30pm Village Hall
Thurs 25 Jan	Service at Cheshire Home 11.00am
Sun 28 Jan	Epiphany 4 8.00am Holy Communion (1662) (Canon Sue Booyes) 10.30am Sung Eucharist

Weekly events

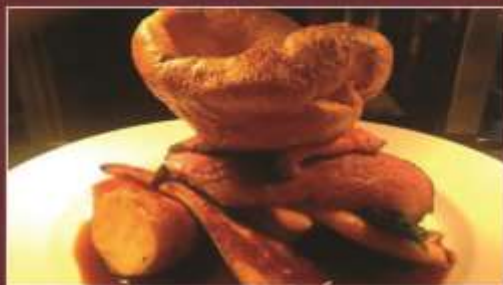
Tuesday	Coffee in the Abbey 10.30am-12noon Bellringing Practice 7.30pm Abbey Fishmonger 9.30am to 9.50am by War Memorial (p.34)
Wednesday	Holy Communion at Berinsfield Church 9.30am Song School Dorchester Abbey 5.00pm
Thursday	Baby & Toddler Group 9.30am – 11.00am Village Hall: (term time only)
Friday	Choir Practice 7.00pm Abbey

Regular events also appear in the Parish Council's website:
www.dorchesteronthames.co.uk

Church services in the Abbey appear in red.
More details can be found at :
www.dorchester-abbey.org.uk

For details of services at St Birinus RC Church go to: www.stbirinus.co.uk

A 'Harty' Sunday



Enjoy a super Sunday Lunch
at The White Hart
in delightful Dorchester on Thames
SERVED FROM 12 NOON THROUGH TO 8PM

*A choice of three roasts as well as fish, chicken
and vegetarian options - £18 for two courses.*



10% off when you join the
Oxfordshire Hotels restaurant club



White Hart Hotel Restaurant
Dorchester on Thames, Oxfordshire
01865 340074
www.white-hart-hotel-dorchester.co.uk



VERITY HICKMAN PRIVATE CARE

.....offering excellence in all manner of home care including
personal care, medication management, dementia care, mobility
problems, equipment and shopping. Live-in care can be
arranged. Ring me, I can help.

Please phone 01865 891 481 or 07879 46 80 41

HOWARD CHADWICK FUNERAL SERVICE

A caring family owned and managed Funeral Service

- Dedicated Private Chapel of Rest •
- Golden Charter Pre-Paid Funeral Plans •
- Specialists in Memorial Stones and Designs •

**Benson Lane, Crowmarsh Gifford
Wallingford OX10 8ED**

Tel: 01491 825222

www.chadwickfuneralservice.co.uk



CONTACTING THE POLICE

To report a non-emergency crime, or to give information to Thames Valley Police, call **101**. Alternatively, call Crimestoppers anonymously on **0800 555111**. In the event of an emergency dial **999**.

HEALTH SERVICES

DIRECT LINE TO URGENT LOCAL HEALTH SERVICES

Dial **111** to access urgent local NHS health care services. Where possible, they will book you an appointment or transfer you to the people you need to speak to or send an ambulance if they think you need one. For non-urgent health needs you should contact your GP in the usual way.

MINOR INJURIES

The Minor Injuries Unit at Abingdon Hospital, Marcham Road, daily from 10.00 am to 10.30 pm: **01865 903476**.

A&E

The nearest A&E units are at the John Radcliffe Hospital in Oxford (**01865 741166**) and the Royal Berkshire in Reading (**01183 225111**)

SURGERIES

Berinsfield Health Centre: **01865 340558**
Clifton Hampden: **01865 407888**
Millstream Benson: **01491 838286**

ROOM HIRE

ABBEY GUEST HOUSE BOOKINGS

To hire the Abbey Guest House for private functions, meetings, exhibitions, etc, contact Kate Herbert on **01865 343164**.

HIRE OF DORCHESTER VILLAGE HALL

To hire our Village Hall, contact Tracey Francis; bookings@dorchesteronthamesvillagehall.org.uk or telephone **01865 340352**.

Please telephone at least 24 hours in advance to arrange collection of the key.

FAULTS AND COMPLAINTS

STREET LIGHTING

Report any problems with a street light to **0800 317802**, available 24 hours a day. Callers will be asked for the address of the site and the nature of the fault.

HIGHWAYS AND FOOTPATHS

Ring Oxfordshire Highways on **0845 3101111**, available five days a week, with a 24-hour answering facility. Complaints can also be sent via e-mail to southernarea@oxfordshire.gov.uk.

BLOCKED DRAINS

Ring Thames Water for blocked drains on **0800 316 9800**. Callers will be asked for the postcode of the address where the drains are blocked.

REFUSE COLLECTION

If your rubbish is not collected on the due date contact the contractor direct. Call **03000 610610** and the website: www.morerecycling.co.uk

BERINSFIELD LIBRARY

Green Furlong, Berinsfield **01865 340771**
Free Internet access. DVDs can be ordered.

OPENING HOURS

Mon - closed
Tues, Wed, Fri 10.00am - 12.30pm
Tues 2.00-7.00pm
Weds, Thurs 2.00-5.30pm
Fri 2.00-5.00pm
Sat 10.00am - 12.30pm

Useful Information

ANIMAL WELFARE

RSPCA (wildlife): **0300 123 0206**
St Tiggywinkles animal rescue: **01844 292292**
Swan Lifeline: **01753 859397**

TRANSPORT

DORCHESTER FLYER

The Dorchester Flyer runs every Friday from Dorchester to Wallingford at 10.15am and 12.00noon, returning at 11.40am and 1.00pm. Tickets must be bought from Lily's in advance.

OTHER BUS SERVICES

Information about bus services, both local and national, is available from www.traveline.info, and **0871 200 2233**, which also provides information about trains, London Underground and Overground and ferries throughout the UK.

OXFORDSHIRE TRAVEL ADVICE LINE

Free journey planning and advice for people over 65 and those needing a high level of support whilst travelling. **01865 323738**

AGE UK

The UK's largest charity working with older people For help and advice etc. go to www.ageuk.org.uk

WALLINGFORD VOLUNTEER CENTRE

WVC Volunteers provide help for the elderly, disabled or vulnerable, especially by giving lifts to medical appointments at hospitals in Oxford, Abingdon and Reading. You need to register as a client. Contact the Centre for more information. **01491 836345**
www.wallingford.volunteercentre@gmail.com

CONTACTING THE PARISH COUNCIL

The Parish Clerk is Geoffrey Russell of The Pigeons (next to The Fleur de Lys), High Street, Dorchester on Thames OX10 7HH; **07745 311439** (during normal office hours, please, unless an emergency); parishclerk@dorchesteronthames.co.uk.

USEFUL CONTACTS

ANGLICAN PRIEST

Dorchester Rectory
Revd. Canon Sue Booy
01865 340007

EDUCATION OFFICER

Margaret Craig
01865 343164
education@dorchester-abbey.org.uk

ABBEY E-MAIL:

admin@dorchester-abbey.org.uk
Contact details for Church Wardens and other Abbey information are on the notice board in the Abbey.

ABBEY WEBSITE

www.dorchester-abbey.org.uk

VILLAGE WEBSITE

www.dorchesteronthames.co.uk

ROMAN CATHOLIC PRIEST

The Presbytery
Fr. John Osman
Bridge End
01865 340417
www.stbirinus.co.uk

Dorchester Abbey Museum E-mail
museum@dorchester-abbey.org.uk



REFUSE COLLECTIONS

Fri 1 Dec **Black**
Fri 8 Dec **Green**
Fri 15 Dec **Black**
Fri 22 Dec **Green**
Tue 2 Jan **Black**
Mon 8 Jan **Green**
Sat 13 Jan **Black**
Fri 19 Jan **Green**
Fri 26 Jan **Black**

Weekdays from 7.00am.
Saturdays from 6.00am.

Weekly: food waste (in bio-degradable starch-based bag or wrapped in newspaper, in green caddy).

The recycling centre at Oakley Wood (off the A4130) is open 8.00am - 5.00pm seven days a week.

Index of advertisers Page

Acupuncture Barn	30
AKT Planning	31
Altom tree care	11
Anderson Orr	8
Arbocare	24
Beauty Essentials	12
Bell Motors	32
Ben Smith Carpentry	8
Berinsfield Community Business	30
Brannfords	11
Bristow	21
Bryan's Locks	25
CP Groundworks	9
Dorchester Fireplaces	30
Dorchester Window cleaning	11
Four Winds	24
Full Circle	12
George Hotel	14
Graceful Gardens	10
Howard Chadwick Funerals	34
In House	8
JEM chimney sweep	14
Jemini	32
Jenks	27
Kes Furniture	10
Larkmead Vets	30
LB Plumbing	10
Martin Drew Logs	30
Massage Matters	15
Millstream Pilates	11
Mindfulness Class	6
Remloc Plumbers	21
Revival	30
Roy Passey Builders	10
St Mary's Dental	24
Steve Wilkinson	25
T W Hayden	25
Verity Hickman	34
Victoria Dyde	32
White Hart	34
Winterbrook Nursing Home	24

OSj50
ORCHESTRA OF ST JOHN'S

Dorchester Abbey
December 2017



Saturday 9 December 7.30pm

Handel's Messiah

Eline Vandenheede soprano

Tai Oney countertenor

John Findon tenor

Christian Valle baritone

Wednesday 13 December 7.30pm

The Ex Swingle Singers

Shillingford & Warborough choir

'Christmas carols plus'



Sunday 31 December 7.00pm

Strauss Gala

Waltzes and Polkas and
Songs

with brilliant young tenor

Christopher Turner

Tickets osj.org.uk 07775 904626